

The Lake Berryessa News

August 31, 2025

Happy Labor Day Weekend

(The actual holiday is tomorrow, September 1, 2025)

There's great weather left to enjoy before we begin our annual Glory Hole Watch 2026 campaign after the first rainfall hits in October?, November?

Origin of Labor Day

Labor Day originates from the late 19th-century labor movement, with the first celebration in New York City in 1882, organized by the Central Labor Union to honor workers' social and economic contributions.

The Central Labor Union in New York City organized the first Labor Day celebration on September 5, 1882, featuring a street parade followed by a picnic.

The idea of Labor Day spread, with states starting to recognize it as a holiday. Oregon was the first state to make it an official holiday in 1887.

The holiday gained traction as states recognized it, and after the violent Pullman Strike of 1894, President Grover Cleveland signed the legislation making Labor Day a national federal holiday in the U.S.



Lake Berryessa Statistics (8/31/25)

The Lake Berryessa water level is at 431.5 feet, 8.5 feet below Glory Hole.

Lake capacity is at 90%

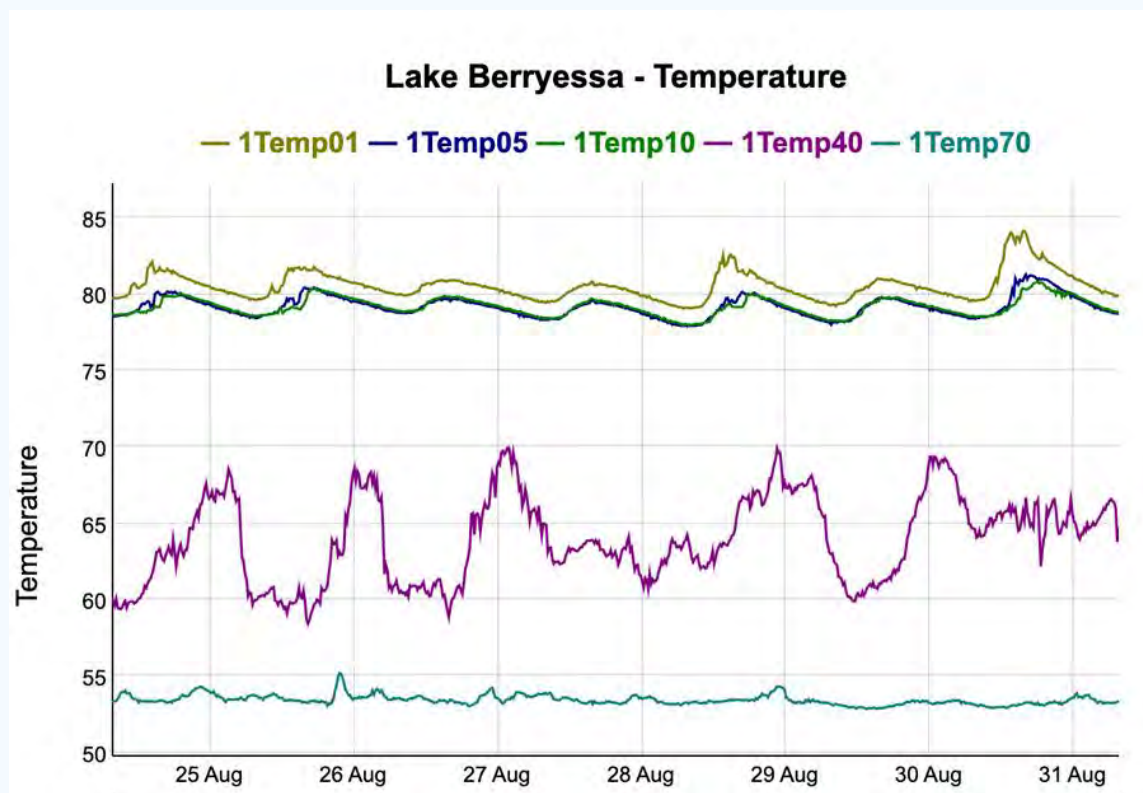
Lake surface temperature is 80 degrees from the surface to 10 feet down.

Decrease in lake level from May 31 to August 31 (92 days) = 7 feet.

Decrease in Lake Level due to evaporation = 0.23 inches per day = 21.2 inches = 1.8 feet.

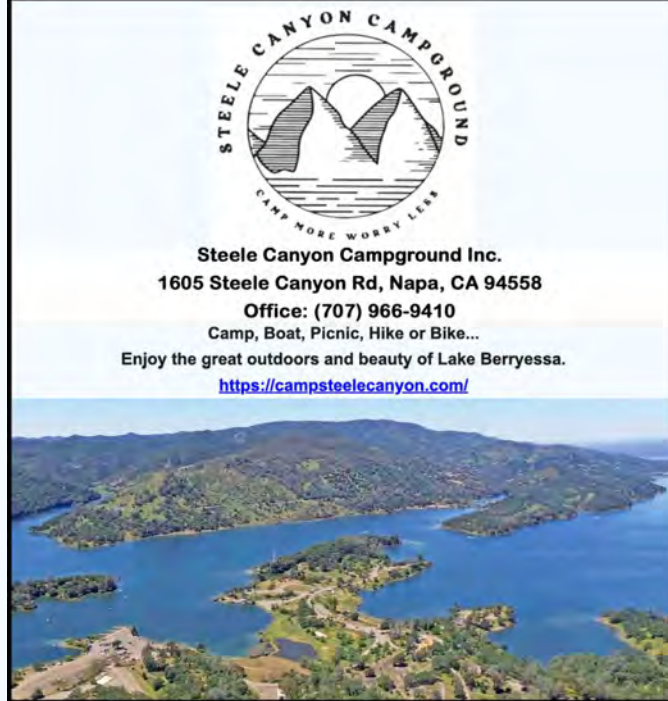
Decrease in lake level due to outflow at Monticello Dam = 5.2 feet.

Evaporation = 26% of the decrease in lake level during the summer!



Lake Berryessa at Steele Canyon Campground
Labor Day Weekend
August 31, 2025





Lake Berryessa Town Hall Meeting, 8/28/25



The meeting at the Capell Volunteer Fire Station was organized and chaired by 4th District Supervisor Amber Manfree. The meeting emphasized community-building and mutual neighbor support. It was an information-packed event which provided too much detail to cover here. Questions should be addressed to Supervisor Manfree's office.

District 4: Amber Manfree
 707-259-8278
Amber.Manfree@countyofnapa.org

Abigail Flores - District 4 Board Aide
 707-299-1478

There was no real controversy about, nor any opposition expressed to, the Camp Margaritaville proposal for the Steele Canyon Rereation Area. The Camp Margaritaville planning process is still underway. The County does not yet know the details of the final plan. A final plan will be presented and evaluated. A series of public meetings will be held. However, it is still a six to twelve month process to review and approve th final plan. If approved, there will still be a projected eighteen month construction process to complete the new resort.

Fire mitigation projects and other updates were described. CalFire is providing vegetation management at the closed resorts.The extensive creation of bulldozer lines have been done all over the county. Berryessa Highlands is surrounded by bulldozer fire breaks.

Sheriff's Office – Safety & Evacuation issues were described in detail.

Firewise provided status of local projects. Despite the present administration cutting a major wildfire mitigation financing project, agencies are stretching their budgets to do the most wildfire mitigation they can under the circumstances.

Public Works – The recent community survey showed that the Berryessa Highlands is eligible for grants for the water and sewer system upgrades. Berryessa Garbage company has not had a price increase in many years. They have now applied for an increase. Rates will increase.

United Policyholders – Reported that the state agreed to changes requested by insurance companies, more policies available but costs will increase. Don't go without insurance! At least get the California Fair Access to Insurance Requirements (FAIR) Plan, an "insurer of last resort" that provides basic fire insurance for properties that are unable to get coverage in the traditional insurance market. It is a crucial option for homeowners and businesses in high-risk areas, particularly those with a history of wildfires.

United Policyholders (UP) is a non-profit 501(c)(3) whose mission is to be a trustworthy and useful information resource and a respected voice for consumers of all types of insurance across the United States. They don't sell insurance or take money from insurance companies. <https://uphelp.org/>

When is a non sequitur....not a non sequitur?

by Peter Kilkus

My brain is sometimes faster than my mouth. People sometime shake their heads at me because I am throwing out seemingly random unconnected ideas. This can cause problems when I'm speaking to someone. Conclusion: Upon further contemplation, maybe I really am the problem!

The simple definition of non sequitur is an argument, conclusion, or statement that does

not logically follow from what came before it. In simpler terms, it's a statement that is completely unrelated or irrelevant to the conversation or argument it's part of. The phrase itself is Latin, meaning "it does not follow"

Remember when "speed reading" and "speed listening" were fads. Does anyone still practice them? Speed reading was a concentrated method of eye movement that shoved the written word into your brain much faster than a "comfortable" reading speed, but it worked. It was different from "scanning" a page. I could do it for a short time, but then my brain began to hurt.

Speed listening was easier to do because it was passive. Experiments proved that the brain could process audible information at a 30% higher rate than normal. A standard recording of a lecture or book on tape could be sped up without causing a frequency increased "chipmunk sound" by simply removing the spaces between words. The speech sounded normal only faster, causing a firehouse of words into the brain.

I tried them both, and they worked! The problem was that brain fatigue set in rather quickly. That made me consider the common practice of human subvocalization.

Subvocalization is the internal, silent "sounding out" of words while reading, essentially an inner voice pronouncing the words in your head. This phenomenon is a natural part of the reading process that can aid in comprehension and memory retention but also limits reading speed to the rate of speech. It is also known as silent speech and can involve subtle physical movements, though it's not as overt as actual speaking. You can feel your tongue and throat muscles moving. There have been fiction stories written about overhearing what people are thinking by focusing a very sensitive microphone at a target's throat.

Subvocalization can enhance your understanding and memory of what you are reading by providing an auditory pathway for processing information. It limits reading speed to roughly the speed of your speech (about 200–250 words per minute), as you are mentally "speaking" the words.

The brain requires actual time to process input into real information and put it into memory. The brain is not a muscle, but it runs on chemistry - the movement of real molecules from place to place in a liquid soup sponge.

So, what about visual information transferred into the brain by something like a television or computer screen? At what point does input exceed capacity and is simply wasting time. How much actually gets in there and how long does it last and remain accessible for any purpose? Not an easy question. Maybe it's simply the visual version of enjoying a delicious drink - gratification with out long-term recollection? Sounds like a very philosophically accurate description of life!

The Wit's Guide to Non-Sequiturs

<https://wit.substack.com/p/the-wits-guide-to-non-sequiturs>

“His reason is as thin as the homeopathic soup that was made by boiling the shadow of a pigeon that had been starved to death.”

— Abraham Lincoln

“There’s nothing in Christianity or Buddhism that quite matches
the sympathetic unselfishness of the oyster.”

“If I had to live my life over, I'd live over a saloon.”

— W.C. Fields

Nestled in the beautiful Berryessa Pines Community

181 Berryessa Drive

<https://181berryessadr.com/>

\$410,000

Embrace a lifestyle of tranquility and natural beauty.
This home offers a serene lakeside living experience,
Picturesque lake view. Single-family home with 3 bdms, 2 bath
property sits on a generous lot of about 7,405 square feet.
The third bedroom is used as an office or den, providing flexibility.
New dual-pane windows, new HVAC system, Access to a spacious deck
offering stunning views of Lake Berryessa.
Ideal for relaxation and entertaining.



Amber Payne, Realtor, Lic. #01302244
707-235-1124
amber.payne@corcoranicon.com
www.amberpayne.net

Lake Views, Outdoor Elegance & Stylish Living!

<https://www.1149rimrockdr.com/>

\$630,000

Tucked into the scenic Berryessa Highlands, this 4BR/2.5 BA home offers the ultimate indoor-outdoor lifestyle with breathtaking lake views and one of the most beautifully terraced backyards you'll ever see. Built in 1985, this home offers the perfect blend of comfort, character, and natural beauty—just minutes from Lake Berryessa recreation.



Features stylish interiors with a chef's kitchen complemented by solid oak floors and a cozy fireplace in the living room that opens to a deck with panoramic lake views! Boat/RV parking, and a dedicated garden area add both charm and function! A magical terraced landscape ideal for garden lovers and outdoor entertainers alike. A true work of art and a MUST SEE



Amber Payne, Realtor, Lic. #01302244
707-235-1124
amber.payne@corcoranicon.com
www.amberpayne.net

1300 Steele Canyon Road

<https://1300steelecanyonrd.com/>



1300 Steele Canyon Road, Napa

\$649,000

CORCORAN

4 3 2,443

ICON PROPERTIES

Sunsets, Space & Style This Lakeview Property Has It All! Perched on a corner lot with stunning lake and sunset views, this one-of-a-kind custom home blends charm, flexibility, and function. The main house offers 3 bedrooms, 2 baths, soaring ceilings, Brazilian cherrywood floors, and a beautifully updated kitchen with quartz counters, soft-close cabinetry, and a large island open to the family room with fireplace. The luxurious primary suite features a jetted tub, heated floors, and French doors leading to a covered porch with lake views. Need more space? Use the home as a 4BR/3BA or enjoy a detached ADU above the garage with its own bedroom, full bath, and kitchenette perfect for guests, rental, or multi-gen living. Outside, the professionally landscaped lot features custom brick patios, terraced gardens, RV/boat parking with electrical hookup, and even a generator & SOLAR. Whether you're entertaining under the stars or unwinding in total privacy, this home has everything you need and then some!

Redevelopment Opportunity | Spanish Flat – Lake Berryessa

<https://spanishflatctr.com/>

Unlock the visionary potential of Spanish Flat—an exciting and strategic redevelopment opportunity in Napa County's scenic Lake Berryessa corridor. This rare offering spans approximately 18.38 acres across two adjacent parcels with a County zoning overlay to allow for commercial and housing uses, including an affordable aspect. Whether you're a developer, investor, or planner with a creative vision, this property is primed for transformation.

\$995,000



Amber Payne, Realtor, Lic. #0130224
707-235-1124
amber.payne@corcoranicon.com
www.amberpayne.net



1011 Steele canyon

<https://1011steelecanyonrd.com/>

4 bedrooms, 2 baths, 10 acres

\$1,149,000

Exceptional Lake Berryessa Estate - Premier Peninsula Location. Discover unmatched privacy with the shoreline just steps from your door. As the only residence on this secluded stretch, it truly feels like your private lakeside retreat. The property attracts diverse wildlife, with visits from bald eagles, ospreys, deer, and foxes. The home features an open floor plan with high ceilings and expansive windows creating a bright atmosphere. Interior finishes include tile, laminate, and carpet flooring with a cozy fireplace. Minutes from the Steele Canyon Recreation Area.

Amber Payne, Realtor, Lic. #01302244

707-235-1124

amber.payne@corcoranicon.com

www.amberpayne.net

Lake Views, Outdoor Elegance & Stylish Living!

<https://www.1149rimrockdr.com/>

\$640,000

Tucked into the scenic Berryessa Highlands, this 4BR/2.5 BA home offers the ultimate indoor-outdoor lifestyle with breathtaking lake views and one of the most beautifully terraced backyards you'll ever see. Built in 1985, this home offers the perfect blend of comfort, character, and natural beauty—just minutes from Lake Berryessa recreation.



Features stylish interiors with a chef's kitchen complemented by solid oak floors and a cozy fireplace in the living room that opens to a deck with panoramic lake views! Boat/RV parking, and a dedicated garden area add both charm and function! A magical terraced landscape ideal for garden lovers and outdoor entertainers alike. A true work of art and a MUST SEE



Amber Payne, Realtor, Lic. #01302244
707-235-1124
amber.payne@corcoranicon.com
www.amberpayne.net

Lake Berryessa Lots

259 Sugarloaf Drive

APN# 019-322-004 - .37+- Acre Lot

Offered at \$68,900

Spanish Flat Woodlands

1121 Steele Canyon Road

APN# 019-442-004 - .31+- Acre Lot

Offered at \$15,000

Flat then downslope

1026 Arroyo Lindo Court

APN# 019-441-014-000 .27+- Acre Lot

Offered at \$43,000

Flat Then Upslope Lot

1268 Steele Canyon Road

APN# 019-432-001 - .21+- Acre Lot

Offered at \$47,000

Flat Space with a hill at the back of the lot

201 Mulford Drive

APN# 019-322-008-000 .52+- Acre Lot

Offered at \$29,000

Corner Lot

817 Bahia Vista Court

APN# 019-451-012 .28+- Acre Lot

Offered at \$29,500

Flat Then Downslope

814 Bahia Vista Court

APN# 019-452-004 .32+- Acre Lot

Offered at \$29,500

Mostly Flat Then Downslope

1187 Steele Canyon Road

APN# 019-451-024-000 .34+- Acre Lot

Offered at \$16,000

Flat Then Downslope Lot

422 Woodhaven Court

APN# 019-504-013-000 .33 +- Acre Lot

Offered at \$85,000

Flat then Downslope Lake View Lot

1053 Headlands Drive

APN# 019-482-011 .27+- Acre Lot

Offered at \$59,000

Mostly Flat Then Upslope

1183 Steele Canyon Road

APN# 019-451-023-000 .35+- Acre Lot

Offered at \$16,000

Flat Then Downslope Lot

1045 Arroyo Grande Drive

APN# 019-462-027-000 .51 +- Acre Lot

Offered at \$65,000

Flat then Upslope Lot

1078 Headlands Drive

APN# 019-432-010-000 .23 +- Acre Lot

Offered at \$50,000

Flat Then Upslope Lot

1100 Headlands Drive

APN# 019-504-006-000 .24+- Acre Lot

Offered at \$125,000

Flat Improved Lot

9419 Steele Canyon Road

APN# 032-110-045-000 41.73 +- Acres

Offered at \$475,000

Improved Acreage

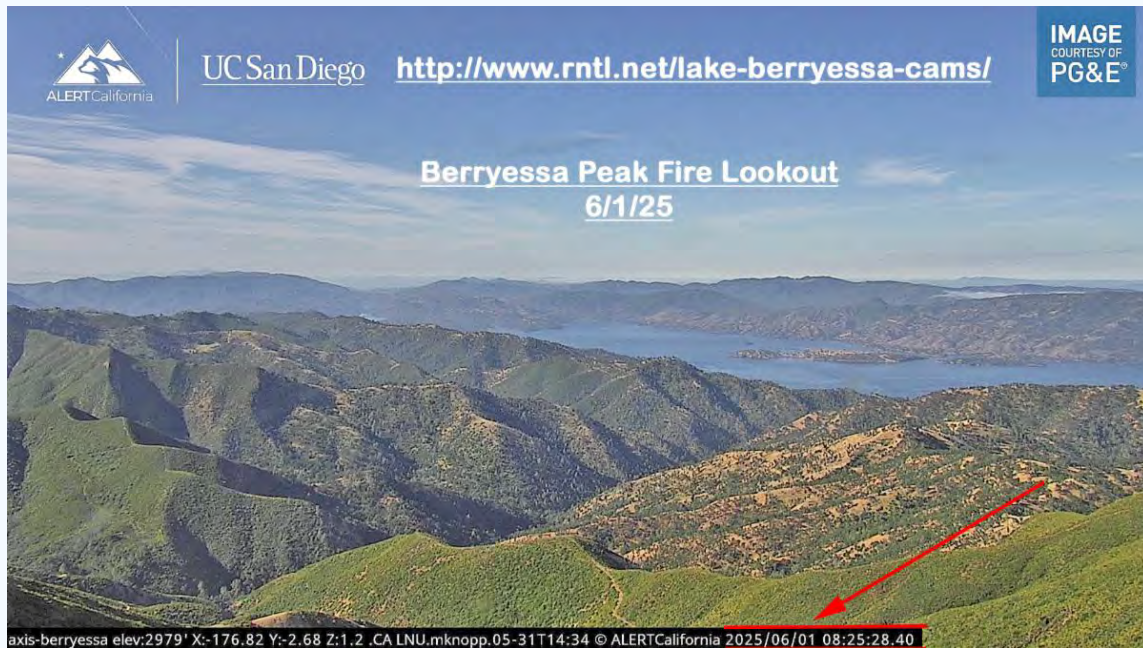


Amber Payne, Realtor, Lic. #01302244
707-235-1124
amber.payne@corcoranicon.com
www.amberpayne.net

Lake Berryessa Fire Watch Cameras

This site covers the whole Lake Berryessa Region.

<http://www.rntl.net/lake-berryessa-cams/>





Steele Canyon Campground Inc.

1605 Steele Canyon Rd, Napa, CA 94558

Office: (707) 966-9410

Camp, Boat, Picnic, Hike or Bike...

Enjoy the great outdoors and beauty of Lake Berryessa.

<https://campsteelecanyon.com/>



Lake Berryessa Boat & Jet Ski Rentals

Take advantage of our low off-season rates through May 17th

Wakeboard/Ski Boats, Pontoon Boats

Jet Skis, Fishing Boats, Kayaks & Paddleboards

We include the gas in all our rentals. Which will save you \$\$!

All boats are launched from Spanish Flat.



**4420 Knoxville Rd. (.9 mile north of Spanish Flat Campground)
707-966-4204 or 707-966-4205 www.lakeberryessaboats.com
Call or go online to book now**



707-966-9954
4420 KNOXVILLE RD. NAPA, CA 94558
WWW.BERRYESSABOATREPAIR.COM
LAKEBERRYESSABOATREPAIR@GMAIL.COM

SERVICE, PARTS, & SALES



MERCURY
Authorized Dealer
Service, Parts & Accessories



TOHATSU



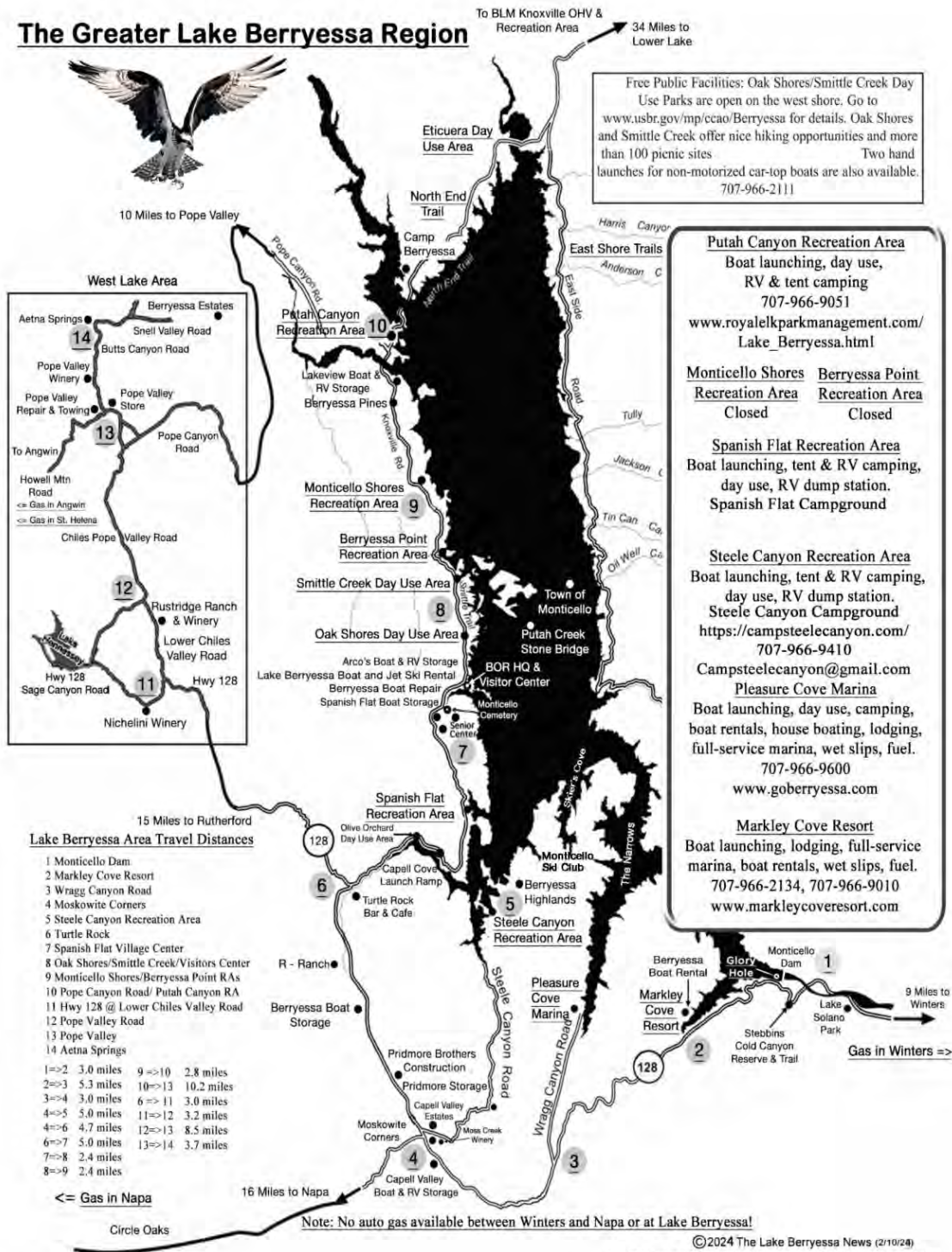
MERCURY
MerCruiser

**WE WORK ON ALL MAKES AND MODELS OF ENGINES, BOATS, AND JET SKIS.
WE SELL MERCURY, MERCURISER, VOLVO-PENTA, AND TOHATSU ENGINES**

707-966-9954
FOR STORAGE, DETAIL, & CONSIGNMENT
707-480-3157

Updated Lake Berryessa Map (1/28/24)

The Greater Lake Berryessa Region



Peter Kilkus | 1515 Headlands Drive, Napa, CA 94558 | 415-307-6906 |

pkilkus@gmail.com | <https://www.lakeberryessanews.com/>



[Unsubscribe](#) | [Update Profile](#) | [Constant Contact Data Notice](#)

The Lake Berryessa News | 1515 Headlands Drive | Napa, CA 94558 US



Try email marketing for free today!

The Lake Berryessa News

September 14, 2025

Spanish Flat Campground is Temporarily Closed (9/14/25)

According to Napa County, Spanish Flat Campground is temporarily closed to the public. It should reopen in a few months.

Lake Berryessa Boat and Jet ski Rentals is fully open for business. They are authorized to launch their boats at the Spanish Flat launch ramp. The weather at Lake Berryessa for the next two weeks looks great. Come on out and take advantage of their off-season rates.

<https://lakeberryessaboats.com/>



OFF SEASON IS HERE!!! SAVE BIG ON WEEKDAYS & SUNDAYS ON ALL BOATS AND JET SKIS NOW!!

Saturday Off-Season begins 9/27/25
Remember, we include your gas. Saving you up to \$250 on your rental!





NXT-22 Off-Season Savings

Sunday Savings
4 Hours \$975 - \$125 = \$850 Off Season
6 Hours \$1195 - \$135 = \$1060 Off Season
8 Hours \$1370 - \$175 = \$1195 Off Season

Weekday Savings
4 Hours \$935 - \$135 = \$800 Off Season
6 Hours \$1135 - \$145 = \$990 Off Season
8 Hours \$1275 - \$150 = \$1125 Off Season

Call to Book



PB 2 Luxury Bennington

Sunday Savings
4 Hours \$660 - \$120 = \$540 Off Season
6 Hours \$895 - \$150 = \$745 Off Season
8 Hours \$1075 - \$210 = \$865 Off Season

Weekday Savings
4 Hours \$615 - \$95 = \$520 Off Season
6 Hours \$820 - \$105 = \$715 Off Season
8 Hours \$960 - \$135 = \$825 Off Season

Book Now



Yamaha WaveRunners

Sunday Savings
2 Hours \$300 - \$30 = \$270 Off Season
3 Hours \$395 - \$45 = \$350 Off Season
4 Hours \$465 - \$55 = \$410 Off Season
6 Hours \$595 - \$65 = \$530 Off Season
8 Hours \$730 - \$100 = \$630 Off Season

Weekday Savings
2 Hours \$280 - \$30 = \$250 Off Season
3 Hours \$370 - \$35 = \$335 Off Season
4 Hours \$430 - \$40 = \$390 Off Season
6 Hours \$540 - \$70 = \$470 Off Season
8 Hours \$640 - \$80 = \$560 Off Season

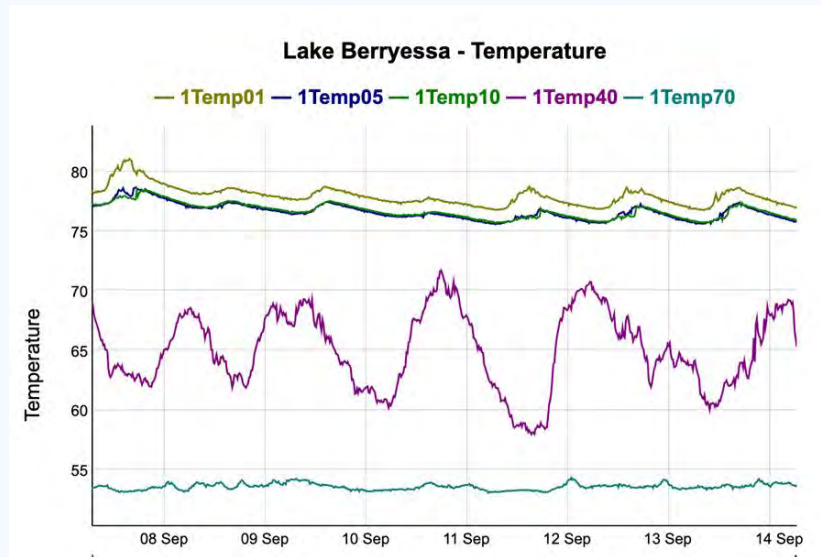
Book Now

We will be open through October (weather permitting) with a limited fleet. Please call for vessel availability after October 4th.

Lake Berryessa Statistics (9/14/25)

The Lake Berryessa water level is at 430.7 feet, 9.3 feet below Glory Hole.

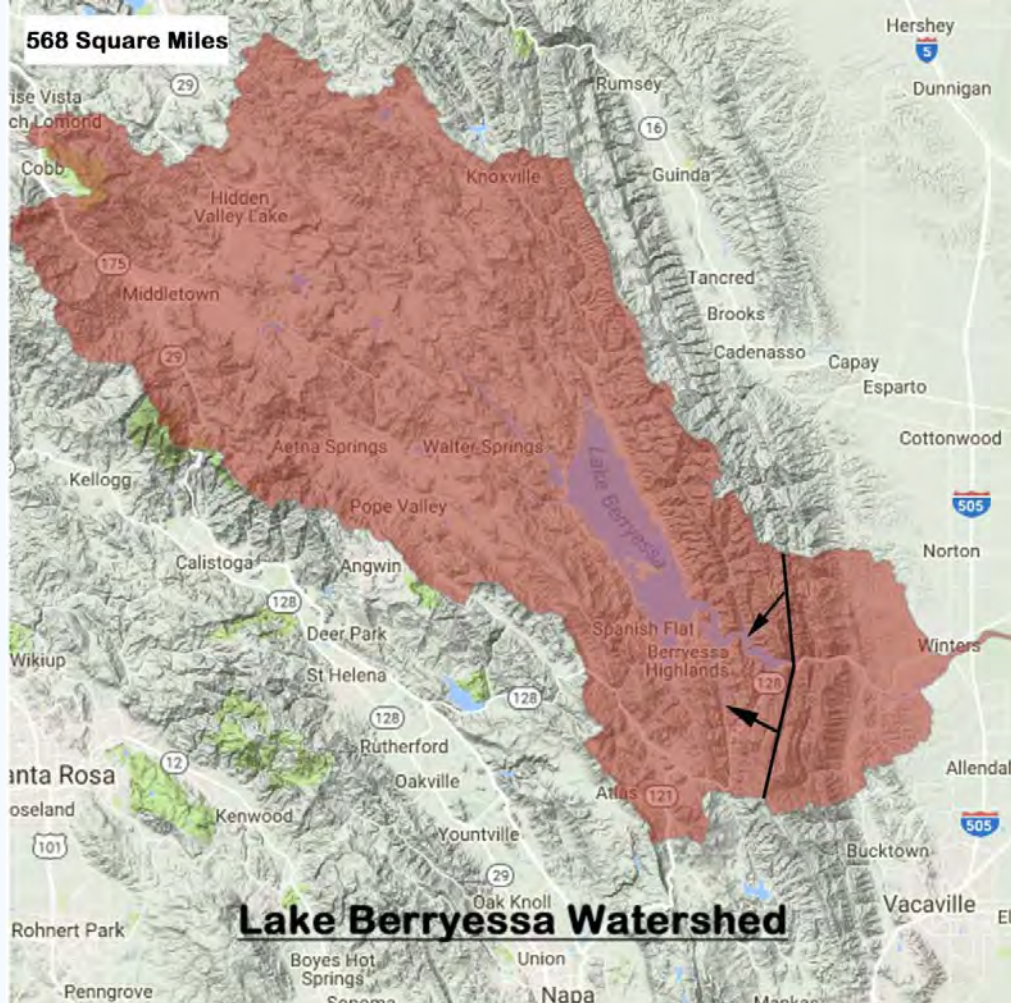
Lake capacity is at 88.9%



Glory Hole Watch 2026: The Pre-Game Show

On September 10, 2025, the first official "rain" fell on Napa County and Lake Berryessa. The official total at Monticello Dam was .07 inches. The first official rain of 2024 was .03 inches on October 13, 2024. But are these rainfall totals significant? They do mitigate the wildfire threat a bit.

Rainfall totals vary significantly across the Lake Berryessa watershed. The Lake Berryessa water supply is derived from the 568 square mile drainage basin above the dam. The elevation of the basin ranges from 182 feet at the dam to 4,722 feet at Cobb Mountain at the upper end of Putah Creek with most of the basin lying below 1,500 feet. Cobb Mountain rainfall is usually about three times of rainfall at Monticello Dam.



The actual rainfall totals and other weather measurements of weather activity can be monitored by anyone by going to the links included below.

Local Lake Berryessa Weather Stations (Weather Underground Network)

Berryessa Highlands (Somewhere in the Berryessa Highlands)

Berryessa Highlands - KCANAPA20

<https://www.wunderground.com/dashboard/pws/KCANAPA20>

Skiers Cove (Below the Berryessa Highlands)

Skier Cove - KCANAPA228

<https://www.wunderground.com/dashboard/pws/KCANAPA228>

East Side Road (Across from Big Island)

East Side Road, Lake Berryessa - KCALAKEB2

<https://www.wunderground.com/dashboard/pws/KCALAKEB2>

Spanish Flat (Near the Spanish Flat Recreation Area)

Roger - KCASPANI1

<https://www.wunderground.com/dashboard/pws/KCASPANI1>

While .04 inches was recorded at the East Side Road station on September 10, no rainfall was recorded at the other Lake Berryessa weather stations.

The rainfall total at Monticello Dam is actually just a minor calibration monitoring point since it shows the effect of the average rainfall across the whole watershed. The most important consideration is lake level rise which determines the water volume held in the lake itself.

So, when do we officially begin Glory Hole Watch 2026? The first rainfall of the year only starts to saturate the ground. Things become interesting when we experience the first significant rainfall. The official "rain year" monitored by the Solano County Water Agency runs from July 1 to June 30. Below is a chart of the last 29 years of rainfall statistics at Lake Berryessa measured at Monticello Dam. Notice the extreme variability.

See my story about Glory Hole Watch 2024 on Napa Valley Features with a lot more detail about how all the pieces work together.

Top Stories of 2024 #5: Lake Berryessa — Glory Hole Watch 2024
[https://napavalleyfocus.substack.com/p/top-stories-of-2024-5-lake-berryessa?](https://napavalleyfocus.substack.com/p/top-stories-of-2024-5-lake-berryessa?utm_source=publication-search)
[utm_source=publication-search](https://napavalleyfocus.substack.com/p/top-stories-of-2024-5-lake-berryessa?utm_source=publication-search)

Lake Berryessa doesn't begin to rise until about 2.5-3.0 inches of rainfall has saturated the dry ground. Which means that Glory Hole Watch 2026 will officially begin on the first day that Lake Berryessa begins to rise. Get ready to rumble!

Berryessa Highlands Rentals

108 Parkview, 3 bd/2 bath, \$2,600 per month

1104 Steele Canyon Road, 4 bd/2 bath, \$2,700 per month

1280 Steele Canyon Road, 3 bd/3 bath, \$3,700 per month
Water/sewer included - HUGE LAKE VIEWS!

Coming Soon - For Sale

New Lake View Home on 1/2 acre, \$499,000



Robin Short, Realtor
707-738-3006
DRE # 01890377
<https://winevalleyhomes.com/>

Lake Berryessa
Property Management and Sales

Reclamation announces seasonal hours and facility updates at Lake Berryessa

The Bureau of Reclamation adjusted operating hours at Lake Berryessa beginning Sept. 7, as part of its seasonal transition. Visitors are encouraged to plan ahead for changes to facility access, boating regulations, and recreation services.

Dufer Point Visitor Center

- Open weekends and holidays, 12 to 3 p.m.
- America the Beautiful Interagency Passes available by appointment on weekdays and during open hours on weekends

Oak Shores Day Use Area

- North End: Closed for the season starting September 7
- South End: Open daily from 7:30 a.m. to 5 p.m.
- Parking and launch fees must be paid and receipts displayed on dashboards
- America the Beautiful Interagency Passes available by appointment on weekdays and during open hours on weekends
- Group Reservations - Oak Shores offers four large shade shelters at Acorn Beach and Foxtail Flat. Reservations for groups of up to 50 people are available for \$25 per shelter, per day at [Recreation.gov](https://www.recreation.gov). For larger gatherings, contact the Park Ranger Office at 707-905-7896.

Smittle Creek and Eticuera Day Use Areas

- Open year-round for wildlife viewing, picnicking, and hand-launch watercraft
- Smittle Creek Trail remains open and accessible from two trailheads:
 - Smittle Creek Day Use Area (year-round)
 - Coyote Knolls parking lot (summer only)
- Starting September 7, parking lot gates will close at 5 p.m.

Capell Cove Boat Launch

- Closed indefinitely due to staffing.

Boating and Mussel Prevention

- 30-Day Quarantine Requirement:
- Beginning November 2024, all trailered vessels must complete a free 30-day quarantine before launching, unless they:
 - Already have a Lake Berryessa green seal
 - Provide proof of decontamination
 - Use non-petroleum-powered or non-trailered vessels
- Learn more at the [Solano County Water Agency Mussel Prevention Program](#)

Tip: Boaters should confirm ramp closing times with operators to avoid delays or a second quarantine period.

Concession-Operated Facilities

Alternative recreation opportunities, including boat launching, are available at concession-operated sites:

- Markley Cove Resort: [markleycove.com](https://www.markleycove.com) | 707-966-2134
- Pleasure Cove Marina: [goberryessa.com](https://www.goberryessa.com) | 707-966-9600
- Steele Canyon Recreation Area: [campsteelecanyon.com](https://www.campsteelecanyon.com) | 707-966-9410
- Spanish Flat Recreation Area: [Spanish Flat Campground](https://www.spanishflatcampground.com) | 707-966-0200
- Putah Canyon Recreation Area: [royalelcparkmanagement.com](https://www.royalelcparkmanagement.com) | 707-966-9051

For more information about activities, fees, maps, and updates, visit the [Lake Berryessa Website](#), call 707-905-7896, or email BOR-Berryessa@usbr.gov.

Reclamation plans Open House to discuss East Side Road Projects at Lake Berryessa

*Rehabilitation work is planned to address damage
from 2020 LNU Lightning Complex Fire*

The Bureau of Reclamation will host an open house at Lake Berryessa's Dufer Point Visitor Center on Sept. 17, from 6 to 8 p.m. to share information and gather public feedback on upcoming projects along East Side Road, scheduled to begin in 2025. Reclamation is preparing Environmental Assessments to guide several restoration and management efforts. The first project, the East Side Road Fuel Reduction Project, proposes targeted grazing and prescribed fire to reduce wildfire risk and improve ecosystem health. This assessment is expected to open for public comment later this fall.

In addition, Reclamation has secured federal funding to support rehabilitation efforts to replace East Side Road culverts and rehabilitation of burned areas, which will restore fencing and native grasslands damaged by the wildfire.

These projects aim to address non-emergency repairs and improve lands unlikely to recover naturally following the 2020 LNU Lightning Complex Fire, which burned more than 400 acres of Lake Berryessa's northeast shoreline and 60% of Solano Project lands. Planned efforts will also help reduce invasive species such as black mustard and mitigate future fire risk.

For more information, contact the Lake Berryessa Field Office at 707-905-8469, emailing BOR-Berryessa@usbr.gov, or visit the Lake Berryessa website at <https://www.usbr.gov/mp/ccao/berryessa/>.

The Lake Berryessa News Free Content

The Lake Berryessa News (<https://www.lakeberryessanews.com/>) can be your primary source of information about Lake Berryessa - present and past. Our motto is (and it's basically true) that, "Without The Lake Berryessa News, there would be no Lake Berryessa news."

There are hundreds of stories, photos, and documents dating back to before the completion of Monticello Dam and the drowning of the Berryessa Valley and the Town of Monticello. Free downloadable chapters of my books are also there for you to access. My goal is to provide factual news and information for and about the Lake Berryessa region and its extended community. Tim Carl of Napa Valley Features (<https://napavalleyfocus.substack.com/>) graciously wrote about The Lake Berryessa News in articles on his publication:

[Peter Kilkus: nearly two decades of hyper-local news reporting in Napa County](#)

[Top Stories of 2024 #5: Lake Berryessa — Glory Hole Watch 2024](#)

[Free Lake Berryessa Book Chapters Available For Download](#)

[Lake Berryessa Technical Manual: The Science, Engineering, History, and Humor of a Major Unnatural Resource:](#)

[The Death of a Valley](#)

[Why Does Lake Berryessa Exist?](#)

[The Lake Berryessa Watershed](#)

[Rainfall and Lake Level History](#)

[How High Is Lake Berryessa?](#)

[How Deep is Lake Berryessa?](#)

[How Much Water Does Lake Berryessa Hold?](#)

[Mean Sea Level: Is There Such A Thing As Accurate Height?](#)

[Water In, Water Out, But From Where?](#)

[Does the WALROS Like Lake Berryessa?](#)

[Why is Lake Berryessa Not a Part of the Berryessa Snow Mountain National Monument?](#)

[East Side Story](#)

[Hiking and Wildlife Viewing](#)

[Are There Quail on Quail Ridge?](#)

[Why Does A Hiker Cross The Road? To Get To Stebbins Cold Canyon!](#)

[Private Houseboats - Yes; Private RVs & Trailers - No: Why?](#)

[Motorized Boats Banned From Big Island Lagoon! Why!](#)

[Archeologists Can't Dunk But Can Dig](#)

[What Can't You Do At Lake Berryessa?](#)

[Napa Opposes Building the Monticello Dam](#)

[Monticello Dam Construction](#)

[Raise Monticello Dam](#)

[Power Generation at Monticello Dam](#)

[Monticello Dam Failure Analysis](#)

[Predicting the Future & Glory Hole Drone Videos](#)

[As Lake Berryessa Turns!](#)

[The Ins and Outs & Ups and Downs of Lake Berryessa](#)

[Does Lake Berryessa Sweat in the Summer?](#)

[Glory Hole Introduction](#)

[How Does Glory Hole Work?](#)

[Glory Hole: Awesome, Frightening, But Dangerous?](#)

[Policy And Politics Betray The People: The Lake Berryessa Saga: 1958 - 2020](#)

[I. The Five Tragedies Of The Berryessa Valley: A History Of Heartbreak](#)

[II. Lake Berryessa Political History Timeline](#)

[III. The “Big Lie”: How It All Began](#)

[IV. The “Big Fail”: Napa Abandons Lake Berryessa \(1975\)](#)

[V. The “Big Picture”: Lake Berryessa Issues: 1957 - 2012](#)

[VI. The “Big Illusion”: Notice Of Intent](#)

[VII. The “Big Fight”: Facts Do Matter](#)

[VIII. The “Big Betrayal”: Perversion Of Public Law 96-375](#)

[IX. The “Big Mistake”: Pensus - The Beginning Was The End!](#)

[X. The “Big Hole In History”: Post-Pensus Blues](#)

[XI. The “Big Boondoggle”: Creation Of A Phony National Monument](#)

[Addendum 1. Dueling Napa Register Letters To The Editor](#)

[Addendum 2. The Napa Register View](#)

[Index Of Primary Documents](#)

Nestled in the beautiful Berryessa Pines Community

181 Berryessa Drive

<https://181berryessadr.com/>

\$410,000

Embrace a lifestyle of tranquility and natural beauty.
This home offers a serene lakeside living experience,
Picturesque lake view. Single-family home with 3 bdrms, 2 bath
property sits on a generous lot of about 7,405 square feet.
The third bedroom is used as an office or den, providing flexibility.
New dual-pane windows, new HVAC system, Access to a spacious deck
offering stunning views of Lake Berryessa.
Ideal for relaxation and entertaining.



Amber Payne, Realtor, Lic. #01302244
707-235-1124
amber.payne@corcoranicon.com
www.amberpayne.net

Lake Views, Outdoor Elegance & Stylish Living!

<https://www.1149rimrockdr.com/>

\$630,000

Tucked into the scenic Berryessa Highlands, this 4BR/2.5 BA home offers the ultimate indoor-outdoor lifestyle with breathtaking lake views and one of the most beautifully terraced backyards you'll ever see. Built in 1985, this home offers the perfect blend of comfort, character, and natural beauty—just minutes from Lake Berryessa recreation.



Features stylish interiors with a chef's kitchen complemented by solid oak floors and a cozy fireplace in the living room that opens to a deck with panoramic lake views!
Boat/RV parking, and a dedicated garden area add both charm and function!
A magical terraced landscape ideal for garden lovers and outdoor entertainers alike.
A true work of art and a MUST SEE



Amber Payne, Realtor, Lic. #01302244
707-235-1124
amber.payne@corcoranicon.com
www.amberpayne.net

<https://1300steelecanyonrd.com/>



1300 Steele Canyon Road, Napa

\$644,000

CORCORAN

4 3 2,443

ICON PROPERTIES

Sunsets, Space & Style This Lakeview Property Has It All! Perched on a corner lot with stunning lake and sunset views, this one-of-a-kind custom home blends charm, flexibility, and function. The main house offers 3 bedrooms, 2 baths, soaring ceilings, Brazilian cherrywood floors, and a beautifully updated kitchen with quartz counters, soft-close cabinetry, and a large island open to the family room with fireplace. The luxurious primary suite features a jetted tub, heated floors, and French doors leading to a covered porch with lake views. Need more space? Use the home as a 4BR/3BA or enjoy a detached ADU above the garage with its own bedroom, full bath, and kitchenette perfect for guests, rental, or multi-gen living. Outside, the professionally landscaped lot features custom brick patios, terraced gardens, RV/boat parking with electrical hookup, and even a generator & SOLAR. Whether you're entertaining under the stars or unwinding in total privacy, this home has everything you need and then some!

Redevelopment Opportunity | Spanish Flat – Lake Berryessa

<https://spanishflatctr.com/>

Unlock the visionary potential of Spanish Flat—an exciting and strategic redevelopment opportunity in Napa County's scenic Lake Berryessa corridor. This rare offering spans approximately 18.38 acres across two adjacent parcels with a County zoning overlay to allow for commercial and housing uses, including an affordable aspect. Whether you're a developer, investor, or planner with a creative vision, this property is primed for transformation.

\$995,000



Amber Payne, Realtor, Lic. #0130224
707-235-1124
amber.payne@corcoranicon.com
www.amberpayne.net



1011 Steele canyon

<https://1011steelecanyonrd.com/>

4 bedrooms, 2 baths, 10 acres

\$1,149,000

Exceptional Lake Berryessa Estate - Premier Peninsula Location. Discover unmatched privacy with the shoreline just steps from your door. As the only residence on this secluded stretch, it truly feels like your private lakeside retreat. The property attracts diverse wildlife, with visits from bald eagles, ospreys, deer, and foxes. The home features an open floor plan with high ceilings and expansive windows creating a bright atmosphere. Interior finishes include tile, laminate, and carpet flooring with a cozy fireplace. Minutes from the Steele Canyon Recreation Area.

Amber Payne, Realtor, Lic. #01302244

707-235-1124

amber.payne@corcoranicon.com

www.amberpayne.net

Lake Views, Outdoor Elegance & Stylish Living!

<https://www.1149rimrockdr.com/>

\$640,000

Tucked into the scenic Berryessa Highlands, this 4BR/2.5 BA home offers the ultimate indoor-outdoor lifestyle with breathtaking lake views and one of the most beautifully terraced backyards you'll ever see. Built in 1985, this home offers the perfect blend of comfort, character, and natural beauty—just minutes from Lake Berryessa recreation.



Features stylish interiors with a chef's kitchen complemented by solid oak floors and a cozy fireplace in the living room that opens to a deck with panoramic lake views! Boat/RV parking, and a dedicated garden area add both charm and function! A magical terraced landscape ideal for garden lovers and outdoor entertainers alike. A true work of art and a MUST SEE



Amber Payne, Realtor, Lic. #01302244
707-235-1124
amber.payne@corcoranicon.com
www.amberpayne.net

Lake Berryessa Lots

259 Sugarloaf Drive

APN# 019-322-004 - .37+- Acre Lot

Offered at \$68,900

Spanish Flat Woodlands

1121 Steele Canyon Road

APN# 019-442-004 - .31+- Acre Lot

Offered at \$15,000

Flat then downslope

1026 Arroyo Lindo Court

APN# 019-441-014-000 .27+- Acre Lot

Offered at \$43,000

Flat Then Upslope Lot

1268 Steele Canyon Road

APN# 019- 432-001 - .21+- Acre Lot

Offered at \$47,000

Flat Space with a hill at the back of the lot

201 Mulford Drive

APN# 019-322-008-000 .52+- Acre Lot

Offered at \$29,000

Corner Lot

817 Bahia Vista Court

APN# 019-451-012 .28+- Acre Lot

Offered at \$29,500

Flat Then Downslope

814 Bahia Vista Court

APN# 019-452-004 .32+- Acre Lot

Offered at \$29,500

Mostly Flat Then Downslope

1187 Steele Canyon Road

APN# 019-451-024-000 .34+- Acre Lot

Offered at \$16,000

Flat Then Downslope Lot

422 Woodhaven Court

APN# 019-504-013-000 .33 +- Acre Lot

Offered at \$85,000

Flat then Downslope Lake View Lot

1053 Headlands Drive

APN# 019-482-011 .27+- Acre Lot

Offered at \$59,000

Mostly Flat Then Upslope

1183 Steele Canyon Road

APN# 019-451-023-000 .35+- Acre Lot

Offered at \$16,000

Flat Then Downslope Lot

1045 Arroyo Grande Drive

APN# 019-462-027-000 .51 +- Acre Lot

Offered at \$65,000

Flat then Upslope Lot

1078 Headlands Drive

APN# 019-432-010-000 .23 +- Acre Lot

Offered at \$50,000

Flat Then Upslope Lot

1100 Headlands Drive

APN# 019-504-006-000 .24+- Acre Lot

Offered at \$125,000

Flat Improved Lot

9419 Steele Canyon Road

APN# 032-110-045-000 41.73 +- Acres

Offered at \$475,000

Improved Acreage

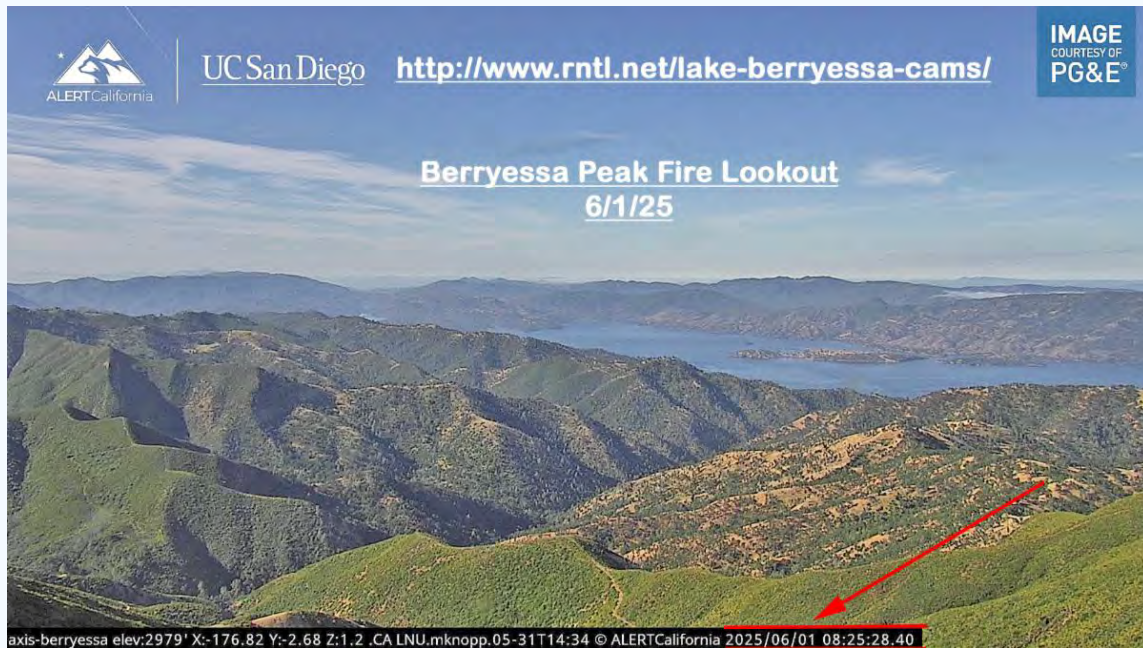


Amber Payne, Realtor, Lic. #01302244
707-235-1124
amber.payne@corcoranicon.com
www.amberpayne.net

Lake Berryessa Fire Watch Cameras

This site covers the whole Lake Berryessa Region.

<http://www.rntl.net/lake-berryessa-cams/>





Steele Canyon Campground Inc.

1605 Steele Canyon Rd, Napa, CA 94558

Office: (707) 966-9410

Camp, Boat, Picnic, Hike or Bike...

Enjoy the great outdoors and beauty of Lake Berryessa.

<https://campsteelecanyon.com/>



Lake Berryessa Boat & Jet Ski Rentals

Take advantage of our low off-season rates through May 17th

Wakeboard/Ski Boats, Pontoon Boats

Jet Skis, Fishing Boats, Kayaks & Paddleboards

We include the gas in all our rentals. Which will save you \$\$!

All boats are launched from Spanish Flat.



4420 Knoxville Rd. (.9 mile north of Spanish Flat Campground)

707-966-4204 or 707-966-4205 www.lakeberryessaboats.com

Call or go online to book now

 **BERRYESSA
BOAT REPAIR**

 **MERCURY**



707-966-9954
4420 KNOXVILLE RD. NAPA, CA 94558
WWW.BERRYESSABOATREPAIR.COM
LAKEBERRYESSABOATREPAIR@GMAIL.COM

SERVICE, PARTS, & SALES

 **MERCURY**
Authorized Dealer
Service, Parts & Accessories

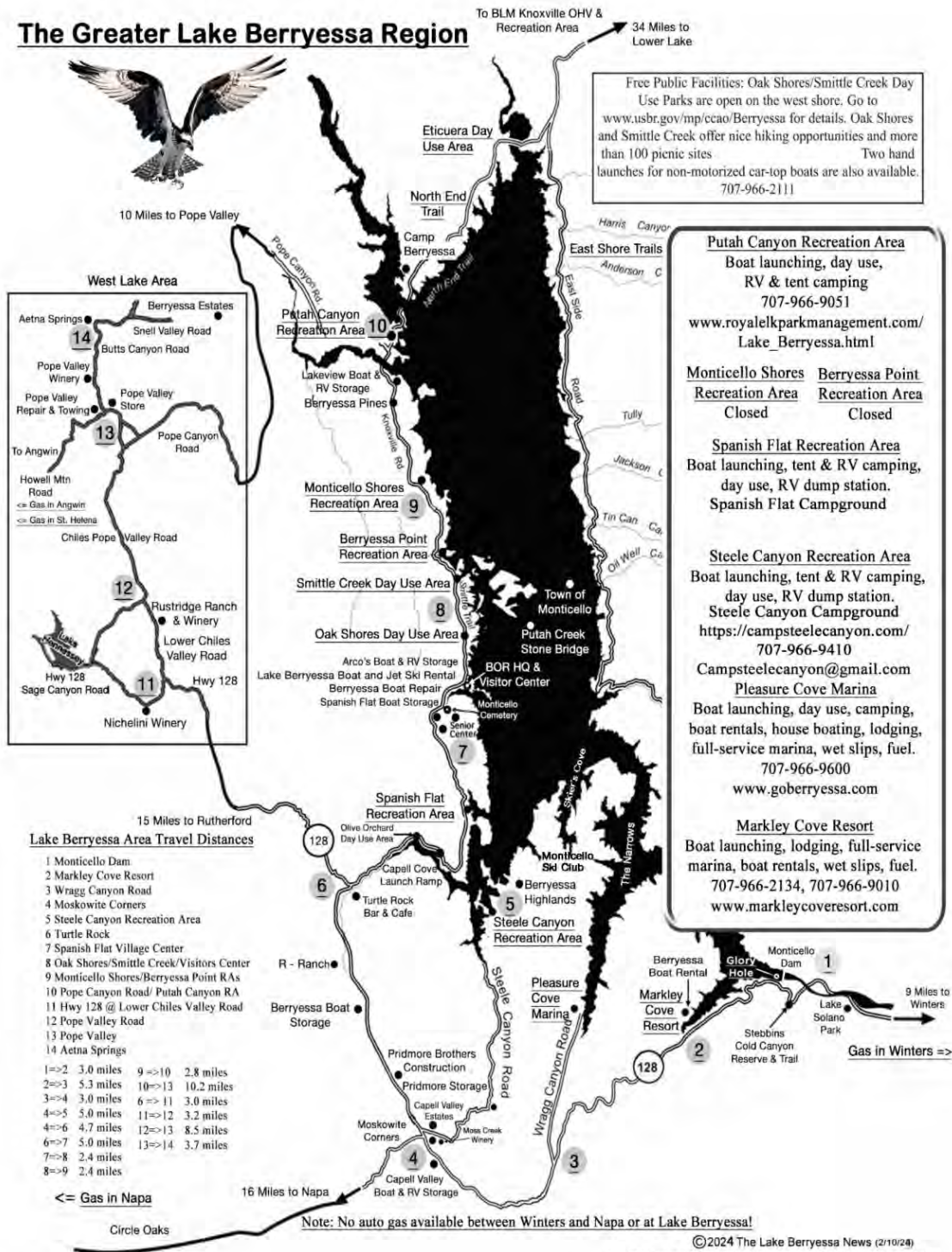
 **TOHATSU**  **MERCURY**
MerCruiser

**WE WORK ON ALL MAKES AND MODELS OF ENGINES, BOATS, AND JET SKIS.
WE SELL MERCURY, MERCURISER, VOLVO-PENTA, AND TOHATSU ENGINES**

707-966-9954
FOR STORAGE, DETAIL, & CONSIGNMENT
707-480-3157

Updated Lake Berryessa Map (1/28/24)

The Greater Lake Berryessa Region



Peter Kilkus | 1515 Headlands Drive, Napa, CA 94558 | 415-307-6906 |

pkilkus@gmail.com | <https://www.lakeberryessanews.com/>



[Unsubscribe](#) | [Update Profile](#) | [Constant Contact Data Notice](#)

The Lake Berryessa News | 1515 Headlands Drive | Napa, CA 94558 US



Try email marketing for free today!

The Lake Berryessa News

September 21, 2025

The great weather continues at beautiful Lake Berryessa!



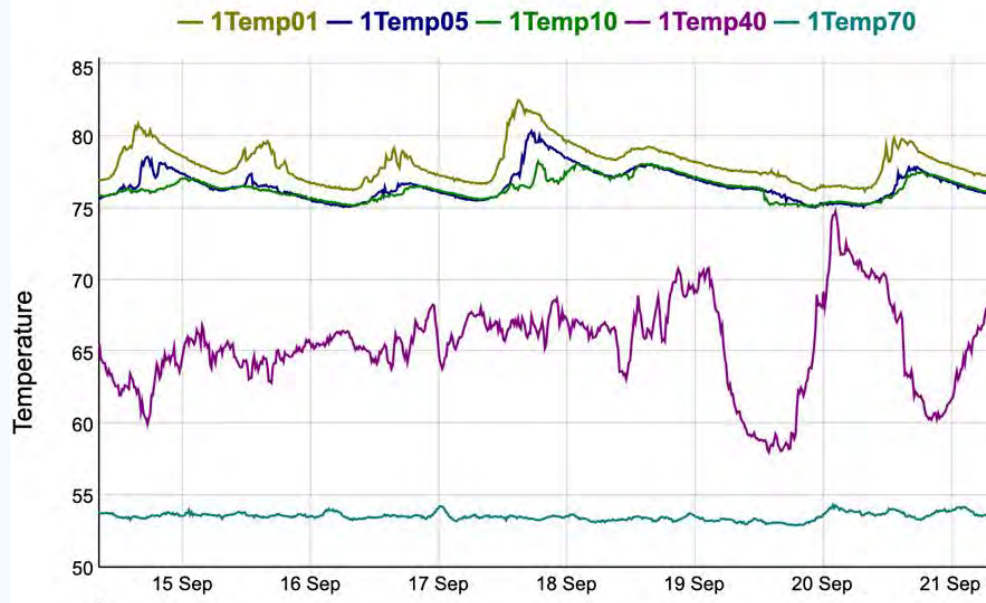
Lake Berryessa Statistics (9/21/25)

The Lake Berryessa water level is at 430.3 feet, 9.7 feet below Glory Hole.

Lake capacity is at 88.5%

Surface temperature dropped to 77 degrees from the surface to 10 feet down.

Lake Berryessa - Temperature



Berryessa Highlands Rentals

108 Parkview, 3 bd/2 bath, \$2,600 per month

1104 Steele Canyon Road, 4 bd/2 bath, \$2,700 per month

1280 Steele Canyon Road, 3 bd/3 bath, \$3,700 per month

Water/sewer included - HUGE LAKE VIEWS!

Coming Soon - For Sale

New Lake View Home on 1/2 acre, \$499,000



Robin Short, Realtor

707-738-3006

DRE # 01890377

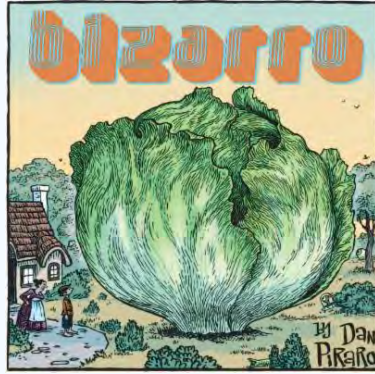
<https://winevalleyhomes.com/>

**Lake Berryessa
Property Management and Sales**

The Sunday Funnies

See some of your favorites at:

<https://www.usatoday.com/comics/>



More Sunday Funnies: How Silly Can You Get!

Can the Pink Salt Trick Help You Lose Weight?

In the "People will believe anything they see on social media" category, sprouts the "pink salt trick", a viral social media trend for weight loss that involves drinking a mixture of pink Himalayan salt and water, sometimes with lemon juice. However, experts and dietitians confirm there is no scientific evidence that this works, and Oprah Winfrey and TV host Rachel Maddow have no connection to it. Fraudulent websites using amazingly realistic AI-created videos falsely claimed Winfrey and Maddow endorsed the so-called "pink salt trick," redirecting users to shady supplement sales pages which promote the fad.

Always check the facts at Snopes.com before you believe what rumors you see on social media. If it doesn't seem right, it's probably not.

<https://www.snopes.com/fact-check/oprah-pink-salt-weight-loss/>

Simply put, no, the "pink salt trick" is not a science-backed strategy for weight loss or debloating. This trend, which involves mixing pink Himalayan salt with lemon juice and water, has gone viral; however, there's no research to support claims that it boosts metabolism, burns fat or reduces bloating.

Some supporters claim that the sodium in the drink contributes to electrolyte balance, enhances hydration and reduces bloating. But adding extra salt to your water could actually have the opposite effect. According to the [American Heart Association](#), about 90% of Americans exceed their daily sodium allotment. For people who already consume a high-sodium diet, more sodium can lead to increased water retention, making you feel puffier.

<https://www.today.com/health/diet-fitness/pink-salt-trick-rcna226084>

Social media never seems to run out of wellness tricks that promise big results in no time. From detox teas to apple cider vinegar shots, there's always a new trend that claims to melt fat, flatten your stomach or boost your metabolism overnight.

Influencers share their pink salt concoctions, racking up millions of views, with promises that the simple drink boosts metabolism, helps you shed pounds and reduces bloating. Some even suggest that the sodium in the salt balances electrolytes and enhances hydration.

However, while pink salt may look pretty in your pantry and lemon water can be refreshing, there's no scientific evidence to confirm that this combination accelerates weight loss or magically reduces stomach bloating. In fact, for many people, adding extra salt to water may actually have the opposite effect, making you feel more bloated.

There are many variations of this hack online, but the recipe is simple. Start with an 8-10 ounce glass of water, add a dash of pink Himalayan sea salt and a squeeze of lemon juice. Some recipes call for a tablespoon of apple cider vinegar or a dash of cayenne pepper. Lemon juice does provide a little vitamin C, but most people don't add enough to boost the nutrition of the drink significantly.

Pink Himalayan salt is often marketed as "healthier" than table salt because it contains trace minerals like magnesium, potassium and calcium. But the amounts are so tiny that they don't provide any meaningful health benefits. Additionally, coarse pink salt doesn't contain iodine, a nutrient that helps support thyroid health. Using pink salt in place of regular iodized salt could potentially create nutrient gaps over time. Also, using coarse salt, such as pink salt, instead of fine salt can lead to consuming more salt overall.

So remember: TANSTAAFL! There Ain't No Such Thing As A Free Lunch.



The Lake Berryessa News Free Content (Repost in case you missed it last week)

The Lake Berryessa News (<https://www.lakeberryessanews.com/>) can be your primary source of information about Lake Berryessa - present and past. Our motto is (and it's basically true) that, "Without The Lake Berryessa News, there would be no Lake Berryessa news."

There are hundreds of stories, photos, and documents dating back to before the completion of Monticello Dam and the drowning of the Berryessa Valley and the Town of

Monticello. Free downloadable chapters of my books are also there for you to access. My goal is to provide factual news and information for and about the Lake Berryessa region and its extended community. Tim Carl of Napa Valley Features (<https://napavalleyfocus.substack.com/>) graciously wrote about The Lake Berryessa News in articles on his publication:

[Peter Kilkus: nearly two decades of hyper-local news reporting in Napa County](#)

[Top Stories of 2024 #5: Lake Berryessa — Glory Hole Watch 2024](#)

[Free Lake Berryessa Book Chapters Available For Download](#)

[Lake Berryessa Technical Manual: The Science, Engineering, History, and Humor of a Major Unnatural Resource:](#)

[The Death of a Valley](#)

[Why Does Lake Berryessa Exist?](#)

[The Lake Berryessa Watershed](#)

[Rainfall and Lake Level History](#)

[How High Is Lake Berryessa?](#)

[How Deep is Lake Berryessa?](#)

[How Much Water Does Lake Berryessa Hold?](#)

[Mean Sea Level: Is There Such A Thing As Accurate Height?](#)

[Water In, Water Out, But From Where?](#)

[Does the WALROS Like Lake Berryessa?](#)

[Why is Lake Berryessa Not a Part of the Berryessa Snow Mountain National Monument?](#)

[East Side Story](#)

[Hiking and Wildlife Viewing](#)

[Are There Quail on Quail Ridge?](#)

[Why Does A Hiker Cross The Road? To Get To Stebbins Cold Canyon!](#)

[Private Houseboats - Yes; Private RVs & Trailers - No: Why?](#)

[Motorized Boats Banned From Big Island Lagoon! Why!](#)

[Archeologists Can't Dunk But Can Dig](#)

[What Can't You Do At Lake Berryessa?](#)

[Napa Opposes Building the Monticello Dam](#)

[Monticello Dam Construction](#)

[Raise Monticello Dam](#)

[Power Generation at Monticello Dam](#)

[Monticello Dam Failure Analysis](#)

[Predicting the Future & Glory Hole Drone Videos](#)

[As Lake Berryessa Turns!](#)

[The Ins and Outs & Ups and Downs of Lake Berryessa](#)

[Does Lake Berryessa Sweat in the Summer?](#)

[Glory Hole Introduction](#)

[How Does Glory Hole Work?](#)

[Glory Hole: Awesome, Frightening, But Dangerous?](#)

[Policy And Politics Betray The People: The Lake Berryessa Saga: 1958 - 2020](#)

[I. The Five Tragedies Of The Berryessa Valley: A History Of Heartbreak](#)

[II. Lake Berryessa Political History Timeline](#)

[III. The "Big Lie": How It All Began](#)

[IV. The "Big Fail": Napa Abandons Lake Berryessa \(1975\)](#)

[V. The "Big Picture": Lake Berryessa Issues: 1957 - 2012](#)

[VI. The "Big Illusion": Notice Of Intent](#)

[VII. The "Big Fight": Facts Do Matter](#)

[VIII. The "Big Betrayal": Perversion Of Public Law 96-375](#)

[IX. The "Big Mistake": Pensus - The Beginning Was The End!](#)

[X. The “Big Hole In History”: Post-Pensus Blues](#)

[XI. The “Big Boondoggle”: Creation Of A Phony National Monument](#)

[Addendum 1. Dueling Napa Register Letters To The Editor](#)

[Addendum 2. The Napa Register View](#)

[Index Of Primary Documents](#)

Nestled in the beautiful Berryessa Pines Community

181 Berryessa Drive

<https://181berryessadr.com/>

\$410,888

Embrace a lifestyle of tranquility and natural beauty.
This home offers a serene lakeside living experience,
Picturesque lake view. Single-family home with 3 bdms, 2 bath
. property sits on a generous lot of about 7,405 square feet.
The third bedroom is used as an office or den, providing flexibility.
New dual-pane windows, new HVAC system, Access to a spacious deck
offering stunning views of Lake Berryessa.
Ideal for relaxation and entertaining.



Amber Payne, Realtor, Lic. #01302244
707-235-1124
amber.payne@corcoranicon.com
www.amberpayne.net

Lake Views, Outdoor Elegance & Stylish Living!

<https://www.1149rimrockdr.com/>

\$630,000

Tucked into the scenic Berryessa Highlands, this 4BR/2.5 BA home offers the ultimate indoor-outdoor lifestyle with breathtaking lake views and one of the most beautifully terraced backyards you'll ever see. Built in 1985, this home offers the perfect blend of comfort, character, and natural beauty—just minutes from Lake Berryessa recreation.



Features stylish interiors with a chef's kitchen complemented by solid oak floors and a cozy fireplace in the living room that opens to a deck with panoramic lake views! Boat/RV parking, and a dedicated garden area add both charm and function! A magical terraced landscape ideal for garden lovers and outdoor entertainers alike. A true work of art and a MUST SEE



Amber Payne, Realtor, Lic. #01302244
707-235-1124
amber.payne@corcoranicon.com
www.amberpayne.net

<https://1300steelecanyonrd.com/>



1300 Steele Canyon Road, Napa

\$644,000

CORCORAN

🏠 4 🗺 3 📄 2,443

ICON PROPERTIES

Sunsets, Space & Style This Lakeview Property Has It All! Perched on a corner lot with stunning lake and sunset views, this one-of-a-kind custom home blends charm, flexibility, and function. The main house offers 3 bedrooms, 2 baths, soaring ceilings, Brazilian cherrywood floors, and a beautifully updated kitchen with quartz counters, soft-close cabinetry, and a large island open to the family room with fireplace. The luxurious primary suite features a jetted tub, heated floors, and French doors leading to a covered porch with lake views. Need more space? Use the home as a 4BR/3BA or enjoy a detached ADU above the garage with its own bedroom, full bath, and kitchenette perfect for guests, rental, or multi-gen living. Outside, the professionally landscaped lot features custom brick patios, terraced gardens, RV/boat parking with electrical hookup, and even a generator & SOLAR. Whether you're entertaining under the stars or unwinding in total privacy, this home has everything you need and then some!

Redevelopment Opportunity | Spanish Flat – Lake Berryessa

<https://spanishflatctr.com/>

Unlock the visionary potential of Spanish Flat—an exciting and strategic redevelopment opportunity in Napa County's scenic Lake Berryessa corridor. This rare offering spans approximately 18.38 acres across two adjacent parcels with a County zoning overlay to allow for commercial and housing uses, including an affordable aspect. Whether you're a developer, investor, or planner with a creative vision, this property is primed for transformation.

\$995,000



Amber Payne, Realtor, Lic. #0130224
707-235-1124
amber.payne@corcoranicon.com
www.amberpayne.net



1011 Steele canyon

<https://1011steelecanyonrd.com/>

4 bedrooms, 2 baths, 10 acres

\$1,149,000

Exceptional Lake Berryessa Estate - Premier Peninsula Location. Discover unmatched privacy with the shoreline just steps from your door. As the only residence on this secluded stretch, it truly feels like your private lakeside retreat. The property attracts diverse wildlife, with visits from bald eagles, ospreys, deer, and foxes. The home features an open floor plan with high ceilings and expansive windows creating a bright atmosphere. Interior finishes include tile, laminate, and carpet flooring with a cozy fireplace. Minutes from the Steele Canyon Recreation Area.

Amber Payne, Realtor, Lic. #01302244

707-235-1124

amber.payne@corcoranicon.com

www.amberpayne.net

Lake Views, Outdoor Elegance & Stylish Living!

<https://www.1149rimrockdr.com/>

\$630,000

Tucked into the scenic Berryessa Highlands, this 4BR/2.5 BA home offers the ultimate indoor-outdoor lifestyle with breathtaking lake views and one of the most beautifully terraced backyards you'll ever see. Built in 1985, this home offers the perfect blend of comfort, character, and natural beauty—just minutes from Lake Berryessa recreation.



Features stylish interiors with a chef's kitchen complemented by solid oak floors and a cozy fireplace in the living room that opens to a deck with panoramic lake views! Boat/RV parking, and a dedicated garden area add both charm and function! A magical terraced landscape ideal for garden lovers and outdoor entertainers alike. A true work of art and a MUST SEE



Amber Payne, Realtor, Lic. #01302244
707-235-1124
amber.payne@corcoranicon.com
www.amberpayne.net

Lake Berryessa Lots

259 Sugarloaf Drive

APN# 019-322-004 - .37+- Acre Lot

Offered at \$68,900

Spanish Flat Woodlands

1121 Steele Canyon Road

APN# 019-442-004 - .31+- Acre Lot

Offered at \$15,000

Flat then downslope

1026 Arroyo Lindo Court

APN# 019-441-014-000 .27+- Acre Lot

Offered at \$43,000

Flat Then Upslope Lot

1268 Steele Canyon Road

APN# 019-432-001 - .21+- Acre Lot

Offered at \$47,000

Flat Space with a hill at the back of the lot

201 Mulford Drive

APN# 019-322-008-000 .52+- Acre Lot

Offered at \$29,000

Corner Lot

817 Bahia Vista Court

APN# 019-451-012 .28+- Acre Lot

Offered at \$29,500

Flat Then Downslope

814 Bahia Vista Court

APN# 019-452-004 .32+- Acre Lot

Offered at \$29,500

Mostly Flat Then Downslope

1187 Steele Canyon Road

APN# 019-451-024-000 .34+- Acre Lot

Offered at \$16,000

Flat Then Downslope Lot

422 Woodhaven Court

APN# 019-504-013-000 .33 +- Acre Lot

Offered at \$85,000

Flat then Downslope Lake View Lot

1053 Headlands Drive

APN# 019-482-011 .27+- Acre Lot

Offered at \$59,000

Mostly Flat Then Upslope

1183 Steele Canyon Road

APN# 019-451-023-000 .35+- Acre Lot

Offered at \$16,000

Flat Then Downslope Lot

1045 Arroyo Grande Drive

APN# 019-462-027-000 .51 +- Acre Lot

Offered at \$65,000

Flat then Upslope Lot

1078 Headlands Drive

APN# 019-432-010-000 .23 +- Acre Lot

Offered at \$50,000

Flat Then Upslope Lot

1100 Headlands Drive

APN# 019-504-006-000 .24+- Acre Lot

Offered at \$125,000

Flat Improved Lot

9419 Steele Canyon Road

APN# 032-110-045-000 41.73 +- Acres

Offered at \$475,000

Improved Acreage

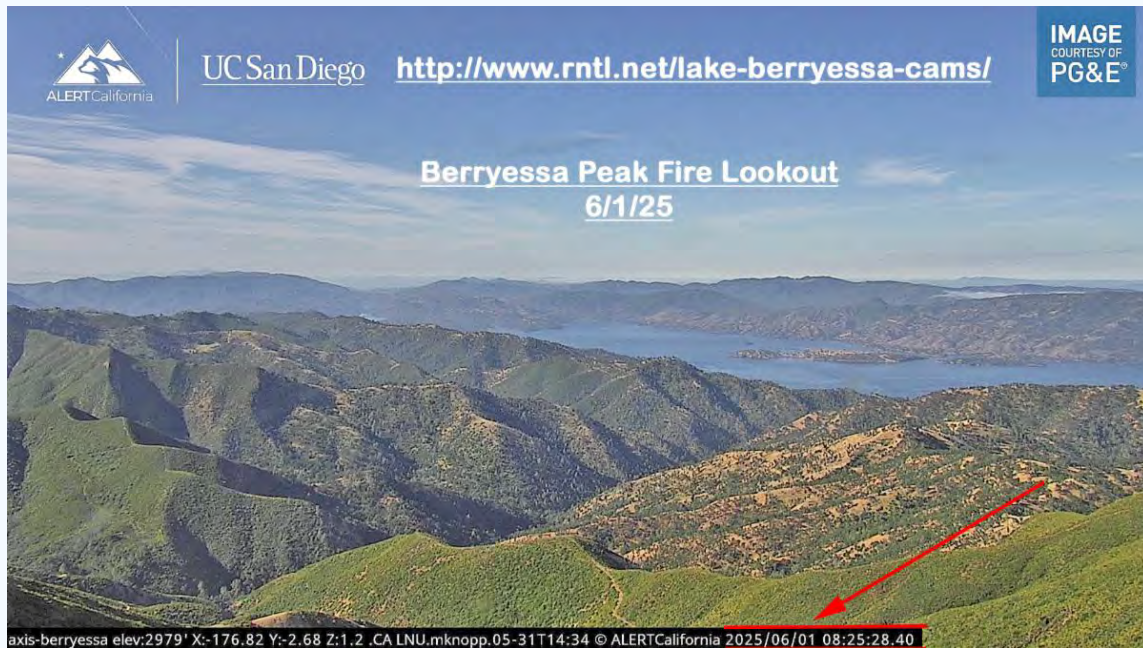


Amber Payne, Realtor, Lic. #01302244
707-235-1124
amber.payne@corcoranicon.com
www.amberpayne.net

Lake Berryessa Fire Watch Cameras

This site covers the whole Lake Berryessa Region.

<http://www.rntl.net/lake-berryessa-cams/>





Steele Canyon Campground Inc.

1605 Steele Canyon Rd, Napa, CA 94558

Office: (707) 966-9410

Camp, Boat, Picnic, Hike or Bike...

Enjoy the great outdoors and beauty of Lake Berryessa.

<https://campsteelecanyon.com/>



Lake Berryessa Boat & Jet Ski Rentals

Take advantage of our low off-season rates through May 17th

Wakeboard/Ski Boats, Pontoon Boats

Jet Skis, Fishing Boats, Kayaks & Paddleboards

We include the gas in all our rentals. Which will save you \$\$!

All boats are launched from Spanish Flat.

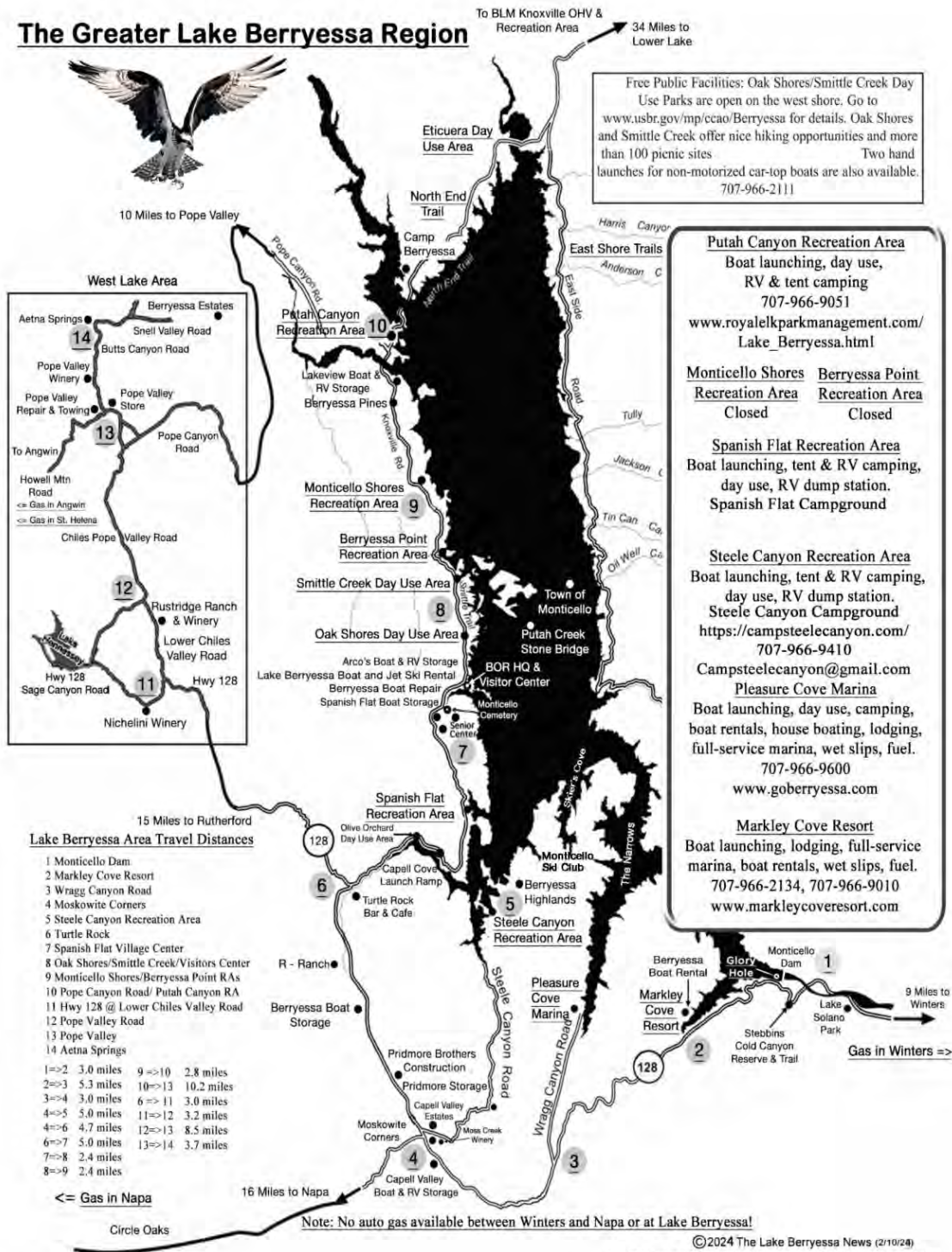


4420 Knoxville Rd. (.9 mile north of Spanish Flat Campground)

707-966-4204 or 707-966-4205 www.lakeberryessaboats.com

Call or go online to book now

The Greater Lake Berryessa Region



Peter Kilkus | 1515 Headlands Drive, Napa, CA 94558 | 415-307-6906 |

pkilkus@gmail.com | <https://www.lakeberryessanews.com/>



[Unsubscribe](#) | [Update Profile](#) | [Constant Contact Data Notice](#)

The Lake Berryessa News | 1515 Headlands Drive | Napa, CA 94558 US



Try email marketing for free today!