

**Free clean energy
is falling from the sky!**

Brian Slavin
(707) 992-5492
brian@sunrisesolarcompany.com

**SUNRISE
SOLAR**

C-46 LIC.# 971900 321 S. MAIN ST. #528 SEBASTOPOL, CA 95472

WWW.SUNRISESOLARCOMPANY.COM



**BERRYESSA
BOAT REPAIR**



Winterize Your Boat Now To Protect It For A Trouble Free Spring!

BERRYESSA BOAT . JET SKI . RV REPAIR & STORAGE

4420 KNOXVILLE ROAD | 3 MIN NORTH OF SPANISH FLAT RESORT

We offer quality repairs and a gated storage facility. We service all makes and models of Boats, Jet Skis, and RVs. Whether you need a basic tune up, rebuilt engine, gel coat or upholstery, we are your best choice. We are Mobile too, land or water, we can come to you! Outdoor Storage from \$50 per month is available. Our Parts Department is available to order anything you need, whether a battery or an engine. Proshop coming soon with basic boating supplies and hot new products for fun on the water!!

berryessboatrepair@gmail.com | 707.966.9954



The Lake Berryessa News

Your Information Gateway to Lake Berryessa and our Napa Back Roads!

March, 2017




Lake Berryessa Takes A Full Breath of Fresh Water Glory Hole Goes Viral!

25¢
Donation

Lake Berryessa is almost a living creature. It breathes in and out, grows and shrinks. But it breathes water not air and breathes in during the winter and out during the summer. Actually it is always breathing out a bit through Monticello Dam all year long.

The last time the lake took a full breath was January, 2006 when the level reached 443.5 feet above mean sea level (msl). For the last ten years the lake has breathed out more than in, it's shallowest breath occurring in October 2016 when the lake level dropped to 398.6 feet.

On February 21, 2017 Lake Berryessa finally took another big deep breath and reached its second highest lake level in history - 443.6 feet msl - a 45 foot rise - the second fastest rise in its 58 year history.

This was above the highest lake level in 11 years. It was only 3.1 feet lower than the highest level in lake history - 446.7 feet in 1983 - 6.7 feet above Glory Hole.

The fastest rise was 61 feet in 1995 - and the lake never even got to Glory Hole level that time. The lake level has only reached Glory Hole 26 times in 58 years.

Rainfall total as measured at Monticello Dam has risen to 41.5 inches as of 3/8/17. This is the second highest amount in 20 years with the 97-98 season hitting 46.3" and 40.6" during the 05-06 season.

Lake Berryessa and our Glory Hole (Morning Glory) Spillway became famous nationally and worldwide during February due to the amazing drone videos by our Lake Berryessa News Drone piloted by FAA-certified drone operator Evan Kilkus.

Lake Berryessa has been featured in the New York Times, the Wall Street Journal, on CBS This Morning and more.

The two latest Lake Berryessa News Drone videos have gone viral on YouTube reaching 2,641,000 views and 490,000 views respectively.

Glory Hole Spill Watch History

Lake Berryessa water washed over and into the Glory Hole on Feb. 12, 2017 at 1:45 PM for the first time in 11 years! Granted it was helped by California Marine Sports wakeboard boats on a beautiful, clear sunny Sunday, but before

Why Does Lake Berryessa Exist?

Many people still think that the lake was created as a water recreation resource. This is not true. The Solano Project, which includes the Monticello Dam, Putah Diversion Dam, and the Putah South Canal was created primarily

been fully paid off by the Solano County Water Agency (SCWA).

The Solano Project is a locally managed project, but Reclamation has the ultimate oversight responsibility, and conducts periodic inspections of all the facilities. SCWA holds the master contract with Reclamation for the operation of the Project. SCWA then contracts the Solano Irrigation District (SID) to assist with the daily operations.

SCWA has a long-term Operation, Maintenance, and Replacement Agreement (OMRA) with Reclamation from the buoy line in front of Monticello Dam down to the Terminal Reservoir. Terminal Reservoir is located in Green Valley at the end of Reservoir Lane.

SCWA conducts extensive monitoring of flows, stage levels, reservoirs levels, weather data, and other operations-related activities for the Solano Project. SCWA is also the water wholesaler for the Solano Project, with long-term water rights agreements with Solano Irrigation District, Maine Prairie Water District, UC Davis, Vacaville, Fairfield, Suisun City, Vallejo, and Benicia.

Help Plan the Future of Lake Berryessa!

The County of Napa, in conjunction with Bureau of Reclamation, is contemplating re-development of five of the Lake Berryessa Recreation Areas as new, well-managed resorts open for public use. We are requesting your assistance by completing the following on-line survey.

<https://survey.zohopublic.com/zs/H0B5lh>

(See Page 4 for details.)



anyone objects that this doesn't count, we were MAKING history.

It was REAL Lake Berryessa water flowing over the lip of Glory Hole. And it was also a bit of good fun the large crowd on hand. Feel the Lake Berryessa spirit after all these years of government turmoil.

2/16/17: Lake Berryessa "officially" hit 439.9 feet - 1 inch below Glory Hole at 7 PM! Wind pushed some small waves over the lip. We really didn't count this because the lake level was not at 440 feet. The water was just below the lip.

2/17/17: Lake Berryessa OFFICIALLY HIT THE TOP of the Glory Hole Spillway, 400.0 feet, at 1 A.M! It went back to 439.9' at 3:30 A.M. and back to 440' at 5:45 A.M. It was stable at 440.0' as of 6 A.M.

2/21/17: Lake Berryessa hit 443.6 feet, 3.6 feet above Glory Hole, the second highest level in history.

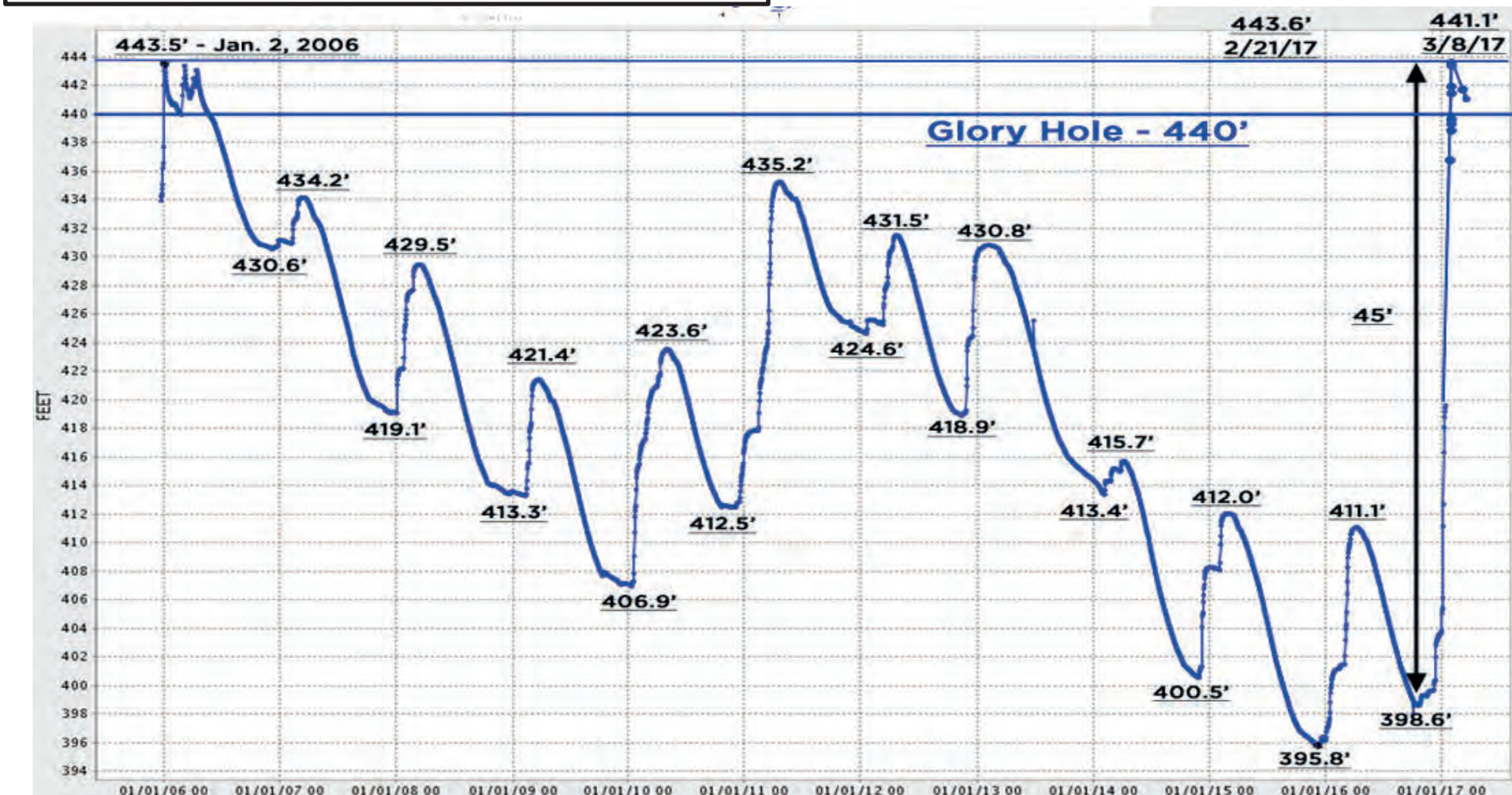
for agricultural irrigation. The secondary purposes were for municipal (drinking water) and industrial uses (brewing Budweiser beer) in Solano County.

The federal government never expected the lake to be used for recreation. The recreational benefits are considered a bonus, not a goal. Napa County gave up all rights to the use of Lake Berryessa water. Only small amounts are used to supply the residential developments, such as the Berryessa Highlands and others, around the lake.

Who Owns Lake Berryessa?

The United States Bureau of Reclamation (Reclamation) is the owner of the Solano Project which includes Lake Berryessa, Monticello Dam, Lake Solano, Putah Diversion Dam, Putah South Canal, and Terminal Reservoir.

The Solano Project was built and funded by Reclamation (federal government), but the original loan has

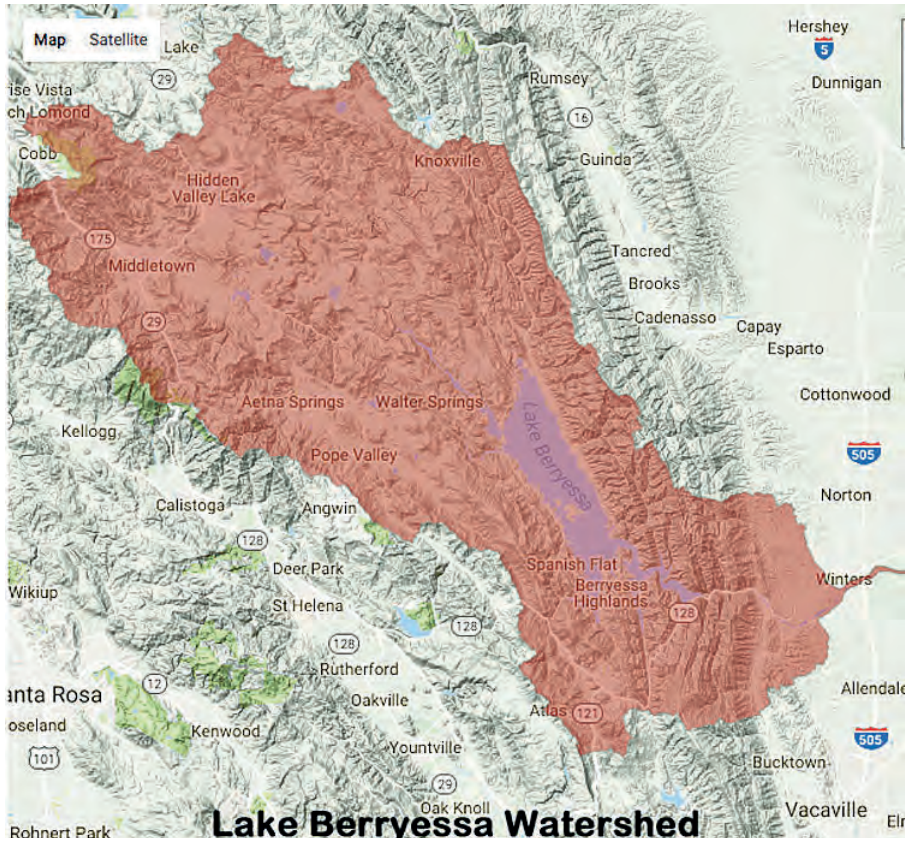


2 **Measuring Levels and Rainfall**
The Lake Berryessa water level is actually measured on the Monticello Dam in a “stilling well” equipped with a float tape attached to a digital rotary encoder that measures accurately to 0.01 ft. Rainfall is measured using a tipping bucket rain gauge. However, the rain gauge on the top of Monticello Dam has never been very representative of precipitation in the overall Lake Berryessa area. The location, surrounded by mountains on two sides with a strong up-draft coming up the canyon and over the dam, prevents getting reliable data. SCWA is considering changing this gauge location.

Rainfall measurements at the dam may not be representative of the area, but they are also not the best indicator of how fast the lake may rise.

The Lake Berryessa watershed encompasses the 576–square mile area primarily fed by Putah Creek which originates from springs on the eastside of Cobb Mountain in Lake County. Putah Creek enters Napa County about 11 miles east of Middletown. It merges with Butts Creek just before it empties into Lake Berryessa.

Therefore, rainfall over the Cobb Mountain and Middletown areas provides the bulk of water entering Lake Berryessa. One reason that Lake Berryessa rose so quickly in 2017 was the very heavy rainfall that has occurred in those areas.



Lake Berrvessa Watershed

SPANISH FLAT MOBILE VILLA

The Only Privately-Owned Park within Walking Distance to Beautiful Lake Berryessa

This small, well-run park combines affordable vacation spaces with permanent homes in a safe, attractive setting.

Year-Round RV Spaces and Manufactured Home Sites Available

Within the Park: Pool, Laundry Facility, Lake Access Trail

Within Walking Distance:
Cucina Italiana Restaurant,
Spanish Flat Country Store

For application, please call

707-966-1124



Forever Resorts or Suntex Marinas: Who Owns Pleasure Cove?

Rumors have been circulating for several months that Suntex is buying Pleasure Cove. Many people, including Pleasure Cove staff, believe that Suntex is already the new owner. This is not accurate according to the Bureau of Reclamation.

Officially, according to Reclamation, there has been "no completed purchase". The two parties (Forever Resorts and Suntex) are in discussions and in the process of resolving some issues. If the parties reach agreement Reclamation then has its own procedures it must follow to complete the transaction. Reclamation is only an interested observer at the present time. If things work out between the parties, Reclamation wishes to have the Pleasure Cove transition completed by the beginning of the upcoming recreation season.

Suntex would be acquiring Pleasure Cove "as is" which means they will be held to the terms of the original Pleasure Cove contract - there will be no new contract negotiations according to Reclamation. Since Pleasure Cove is already 8 years into a 30 year contract with a 10 year extension option, Suntex would be buying into a 32 year contract.

From the perspective of the present Napa County project to evaluate the benefits of the County entering into a Managing Partner Agreement with Reclamation to manage the Lake Berryessa Recreation Areas, this is a positive development. It indicates that at least one large national marina management company sees a profitable business opportunity at the lake.

Lake Berryessa Hits Full Capacity, But 51,708 Acre-Feet Are Missing!

The world-wide attention focused on Lake Berryessa’s Glory Hole Spillway overflowing for the first time in a decade raised some questions from some sharp-eyed observers. Using the published standard capacity of 1,602,000 acre-feet (AF), they noticed that as the level approached the 440 foot mark (100%), the capacity was less than that figure. In fact, at 440 feet (100%) the official storage value was only 96.2% of capacity - a 3.7% discrepancy.

The 1,602,000 AF is a number that was derived from the original Area-Capacity curve developed from surveys of the empty lake bed when the project was being built. In 2007 the Solano County Water Agency (SCWA) performed a comprehensive bathymetric survey of Lake Berryessa to look at sediment accumulation over the last 50 years of the project. Another goal was to verify the accuracy of the Area-Capacity curve. The sedimentation in the lake was determined to be less than expected - minimal considering the 50 year life of the project. A new dataset was developed which can be compared to any future bathymetric study to accurately determine the actual sedimentation rate. The scuba divers who went down to the old Putah Creek Stone Bridge found only a few inches of fine silt on the bridge surface.

During this study a new Area-Capacity curve was developed that was slightly lower than the previous curve. This new lake level versus capacity was officially adopted by the Reclamation and SCWA in 2009. The new curve has a lake capacity of 1,551,292 AF at a level of 440 feet - 50,708 AF less. The difference between the present and former AC curves is a combination of some sedimentation and the difference in technology used to derive the new curve. Obviously another traditional survey of the dry lake bed will not be possible. The bathymetric survey was the only option that could be used to provide a dataset that could be compared in future studies.

The new AC curve has been officially accepted by Reclamation, but the old 1,602,000 AF is still used by most agencies. That figure remains in public descriptions of lake capacity and is proving to be very hard to change since it’s been used for so long.

Bib & Tucker Berryessa Bass Tournament - March 3, 2017

THANKS to the 26 Teams that fished the Bib & Tucker Berryessa Bass Tournaments TOC for the 2015-2016 Season on Friday March 3, 2017 hosted out of Markley Cove.

The Buckhorn hosted a great dinner Thursday night with a Bib & Tucker tasting! Friday morning we had a great blast off with four flights. The morning was warm with a little breeze on the lake, but mostly a calm day. The main lake was the place to be fishing, and teams were mostly catching fish that were staging. Teams reported catching fish on jigs, A-rigs, drop-shot, and crankbaits!

Who will win that trip to Hawaii to fish for Peacock Bass? Looks like our AOY winners also won the Tournament of Champions! First Place winner for the trip to Kauai went to Devin Dick & Toby Farkas with a great sack that weighed 26.82 lbs anchored with a 8.67 lb kicker for 1st Place Big Fish!

With a 5.92 lb kicker, Second Place went to Dave Boettger and John Cregan who brought in a sack that weighed 20.88 lbs. Third Place went to Mike Ryland & Mike Sidebottom with a solid sack that weighed in at 19.53 lbs. With a Fourth Place finish, John Bounds & Jamie Clifton weighed in 18.71 lbs and a 6.28 lb kicker for 2nd Place Big Fish. In Fifth Place, with a sack of 18.64 lbs was Ryan O’Shea & Steve Morton. In Sixth Place, Gary Okusako & Dave Symmons weighed in 17.47 lbs. First out of the money was Ron ‘PJ’ Bruggeman Jr. & John Pearl with a sack of 17.34 lbs.

Thanks to all the teams for supporting the Bib & Tucker Berryessa Bass Tournaments Circuit! Thanks to our Sponsor’s: P-Line, Ficelle’s Bistro, Tomat’s Restaurant, Kasoku Teriyaki & More, Dobyns Rods, Battery Systems, Pisani’s Automotive, The Other Guys, Markley Cove, and CE Ranch, Buckhorn Restaurant, Todd’s Custom Rod Art, Hisui, Marty’s Boat Rental, A-Rig-Wrap, Buckhorn Grill, Pro Cure, Bay Tackle, Putah Creek Café, LEBCO, Bib & Tucker Bourban, River2Sea and Navionics!

See you all on March 12, 2017 (Sunday)! Get your pre-fish on for next Sunday!!! Email or call office phone if you have any questions 530-794-6085 Duke---<)Xx<



Is there a Berryessa version of this joke?

Bob is sitting on the ice all day fishing with no luck, not even a nibble. Cold and tired he is about to leave, when a guy walks up cuts a hole in the ice beside him, and starts pulling out fish as fast as he can drop his hook in the water. Bob can’t believe it, he yells over ” whats your secret?”

“woogatkakeptewrwm” he answers back. “What did you say?” replies Bob. The man spits a large ball of worms on the ice and says to Bob, ” you have to keep your worms warm”.

March Horoscopes

Aquarius (1/20-2/18): The presence of Jupiter in your fourth house indicates newfound personal maturity. The presence of empty pizza boxes in your first apartment, however, suggests otherwise.

Pisces (2/19-3/20): You’ll lose your oldest and dearest friend to smoking this week, shortly after running out of cigarettes.

Aries (3/21-4/19): Life has a way of sneaking up on you when you least expect it, which isn’t surprising, considering what a complete jerk life can be.

Taurus (4/20 – 5/20): There’s nothing harder in the world than losing a child, especially when wagering with a full house.

Gemini (5/21 – 6/21): It will be born with ten perfect little fingers and ten perfect little toes, much to the horror of everyone at the reptile breeding center.

Cancer (6/22-7/22): Enlightenment and confusion will both be yours this week, when a tree falls in the woods only to make the sound of one hand clapping.

Leo (7/23-8/22): You’ll finally become one with nature this week, thanks to a simple process known only as disintegration.

Virgo (8/23-9/22): It is said that the eyes are the windows to one’s soul, which helps explain why so many damn birds keep flying into them

Libra (9/23-10/22): You will experience debilitating pain, unspeakable agony, and the loss of all of your hair when a voodoo doll bearing your likeness falls into the hands of a 5-year-old girl.

Scorpio (10/23-11/21): Forty thousand years after you were cryogenically frozen, scientists will at last bring you back to life when they discover a cure for stupidity.

Sagittarius (11/22-12/21): Scientists around the world will come to praise you as a true trailblazer in the field of Incorrect Particle Physics.

Capricorn (12/22-1/19): When life gives you lemons, why not blame them on your troubled upbringing and consequent inability to show affection? It sure beats making lemonade.



CeCe Short BRE#00783985
Robin Short BRE#01890377
(707) 337-0224 (707) 738-3006
2015 Redwood Rd., Ste. 5
4338 Berryessa Knoxville Rd.
Napa



California OUTDOOR PROPERTIES
www.californiaoutdoorproperties.com



LandLeader
www.landleader.com

NICHELINI
FAMILY WINERY

EST. 1890

5 generations 1 passion

Open 11 AM to 5 PM Weekends
2950 Sage Canyon Road (HWay 128)
Or by appt 1-800-WE-TASTE
www.nichelinivinery.com



SPANISH FLAT COUNTRY STORE & DELI
At beautiful Lake Berryessa
Groceries, Bait, Ice, Beer & ATM
BEST SANDWICHES AT THE LAKE
4318 Berryessa Knoxville Rd., Napa, CA
707-966-1600 fax -707-966-1602

MOSLEY ELECTRIC
Napa Valley

FRANK MOSLEY

P.O. BOX 9314
NAPA, CA 94558

C: 707.326.6730
F: 707.966.5034
E: MOSLEYON@AOL.COM

The Lake Berryessa News
www.LakeBerryessaNews.com

Peter Kilkus
1515 Headlands Drive
Napa, CA 94558
Pkilkus@gmail.com

Subscriptions: \$36 per year
(Make check payable to Peter Kilkus)

In Home Supportive Services At Lake Berryessa IHSS provided services.

Napa County’s Comprehensive Services for Older Adults (CSOA) division provides services supporting older adults and people with disabilities so they may remain safely and well cared for in their own homes and in the community.

A key program within CSOA is In-Home Supportive Services (IHSS), a needs-based program which helps people obtain care within their own homes. It does so by assessing clients and authorizing them to hire a care provider of their choice who is then paid by the IHSS program.

The Napa County Comprehensive Services for Older Adults Unit is currently hiring for IHSS Providers that are willing to work in the Lake Berryessa area for our Lake Berryessa clients.

Lake Berryessa has always been one the areas in Napa County where it is harder to find people who are willing to become IHSS Providers. We have the Recipients— but now want to assist them in finding a good Care Provider so they may remain safely and comfortably in their homes.

The majority of IHSS clients choose to hire a relative to be their care provider, but for some, a relative may not be an option or what works best for them. The IHSS Public Authority is a program that is able to refer potential care providers to IHSS clients.

IHSS currently has over 1,300 care providers who help over 1,100 people in Napa County remain safe, independent and fulfilled in their own homes.

Who is Eligible for IHSS through Napa County?

To receive IHSS you must be:

- > A Napa County resident.
- > SSI/SSP or Medi-Cal eligible.
- > Living in a home, apartment or residence of their choosing (excluding hospital, skilled nursing home, assisted living or licensed care facility).
- > At risk of requiring out of home placement without

What services does IHSS provide?

> Domestic and Related Services: meal preparation, grocery shopping, cleaning, laundry and taking out the garbage.

> Personal Care Services: bathing, feeding, dressing, grooming and toileting.

> Paramedical Tasks: assistance with medications, injections, ostomy care.

> Protective Supervision: monitoring persons with cognitive or mental impairments to prevent injury.

> Transportation and accompaniment to medical appointments.

How do I apply for IHSS?

If you are interested in applying or referring someone to the IHSS program please call 253-6272 to start an application.

How do I become a Public Authority Care Provider?

The Public Authority needs care providers, especially people who live in or are willing to work in Lake Berryessa locations.

Some of the benefits of being a Public Authority Care Provider include: Competitive wages, flexible schedules, paid travel time between clients and overtime pay. If you are interested in becoming a Public Authority care provider please call the Public Authority at 259-8359.

The IHSS program depends on the wonderful care providers who are willing to care for a loved one or who offer to join the Public Authority Registry and care for fellow community members who need help remaining in their home.

Stephanie Vazquez, 707-299-1872



Rustridge Ranch & Winery is open 7 days a week.
Bring the family and explore the backroads of the Napa Valley.
Come picnic under the ancient oaks while tasting our award winning estate-bottled wines. Tour the winery and learn about thoroughbred racehorses.
There is something for everyone at RustRidge.



RustRidge B&B / Winery
2910 Lower Chiles Valley Road
St. Helena, CA 94574
1-800-788-0263 or (707) 965-9353
RustRidge@RustRidge.com



Fishing With Sid

I decided to go take a look at the Glory Hole. It was great to see the water spilling over the top after all the dry years. The lake looks great, and I will have to adjust to the new depths and structures which I'm really looking forward to. We checked out many of my favorite spots, but in fifty-two degree water and less then six inches visibility it was almost impossible for us to lure any bass our way.

I enjoyed the day even though we had no fish. We had a good time checking out the lake which promises to be very productive going into spring and summer.

I met Albert the next day he was going to do some shore fishing and asked my advice on what to use. I told him since the water is murky to use a strong scent Pro-Cure with garlic which would be perfect with a spinner bait - white with chartreuse. It worked! He landed a two pound, four ounce bass in twelve feet of water.



**COMMUNITY CHURCH OF
LAKEBERRYESSA**

Located at 6008 Monticello Road
(Moskowite Corners).

For more information please
Contact Bob Lee at 707-252-4488
or e-mail at terribob@pacbell.net

Monitoring Monticello Dam

After the recent structural failure of the Oroville Dam spillway, many local people had questions about the safety of Monticello Dam as the lake level rose rapidly and overtopped the Glory Hole spillway for the first time in more than a decade. Monticello Dam is a totally different design from Oroville and is statistically extremely unlikely to rise to the top of the dam much less suffer a structural failure due to the water level.

The Bureau of Reclamation has a systematic four-step program that continuously monitors the status of its dams. There is a review and inspection every four years, which involves looking at seismic, hydrologic and static parameters, says Drew Lessard, area manager of the Central California Area of the Bureau of Reclamation.

“Our headquarters in Denver and our area office take turns being in charge of these inspections, which are exhaustive,” Lessard said. “It is visual, looking for anomalies like seepage in the internal galleries that house some of the sensing equipment we rely on for data. But we also evaluate how much loading the horizontal joints are bearing and other structural parameters, evaluate seismic data.

“If anything is out of kilter, we will do more studies to analyze those potential weaknesses. If unwanted changes are found, we make plans for corrective actions and do it then.

“We routinely take cores of concrete from various points in our dams and test them for compressibility — how much load can they stand before giving way. In our experience, overloading of dams from seismic events is less frequent than static loads from the water being held in check.”

Thomas Pate, principal water sources engineer of the Solano Water District, relates an experience he had while at the Denver headquarters of the Bureau of Reclamation some years ago.

“There was a two-story-tall machine designed to test the compressibility of the concrete cylinders that are removed to evaluate the structural integrity of a dam,” Pate said. “I looked at one pile of boxes and it was labeled Monticello Dam. ‘That’s my dam on the floor,’ I thought. The engineer in charge told me that ‘Monticello is one of the better dams we’ve built.’ I found that reassuring.” Locally, we have daily visual inspections of the entire dam site, looking for any potential signs of change that could have consequences. Once every few years, the Bureau of Reclamation comes and they have people crawling all over the dam, checking every aspect of its stability.

According to Lessard, after any event in an area that could affect a dam, the dam is immediately inspected."

BIG city speeds
with **SPECTACULAR** views.

From towers on hilltops we provide high speed, reliable, and affordable internet. Enjoy the perks of "big-city" speeds and knowledgeable technicians who understand and appreciate the beautiful landscape we call home.

ValleyInternet Connecting the Countryside.™

SCHEDULE A FREE SITE SURVEY TODAY
VALLEYINTERNET.COM
707-422-1200

Onion Headlines

Lake Berryessa Area Man Accepts Burden Of Being Only Person On Earth Who Understands How World Actually Works

Trump Insists That Now, More Than Ever, Americans Must Stand Strong In Face Of Empathy

Daily Meditation Really Helping Man Stay Self-Centered

‘What If We Try This?’ Asks Robotics Grad Student About To Eliminate 30% Of Workforce

Scientists Confident Artificially Intelligent Machines Can Be Programmed To Be Lenient Slave Masters

Scientists Continue Developing Alternative Energy Sources For Americans To Waste

Russian Officials Scrambling As Plan To Delegitimize Western Democracy Moving Way Faster Than Intended

Airlines To Phase Out Complimentary Cabin Pressurization

It’s Kind Of Sweet CEO Thinks He’s Doing Good Job

Employee Totally Crushes Presentation Of Idea That Will Soon Bankrupt Company

The Lake Berryessa Chamber of Commerce **3**

wants you to know that

Beautiful Lake Berryessa is OPEN!

All recreation areas - Markley Cove, Pleasure Cove, Steele Canyon, Spanish Flat, and Putah Canyon - are open for launching and will remain open. The Capell Public Launch Ramp is also open..

Oak Shores Day Use Area is great for picnics and viewing the lake and wildlife. After touring around the lake and stopping at local wineries like Rustridge and Nichelini, a wide variety of food and drink is available at Cucina Italiana, Spanish Flat Country Store & Deli, and Turtle Rock.

Delve into the fascinating past of the Town of Monticello, now at the bottom of the lake, by visiting the Berryessa Valley History Exhibit at the Spanish Flat Village Center. Please use this web site to contact our members to make use of their services:

www.lakeberryessanews.com/chamber-of-commerce/



**Allied Propane Service
Chevron Pro Gas**

Bulk and Cylinder Delivery
Propane Cylinders & Accessories
Residential, Agricultural
Commercial, Industrial
24 Hour Emergency Service
All Tank Sizes Available
Aboveground & Underground
Gas System Engineering & Design
Gas Piping Construction
Outdoor Heating Specialists
Vineyard Flaming Specialists

221 Devlin
Napa CA 94558
707-252-5500
707-678- 8500 (Dixon)
Serving the Napa Valley since 1991
www.alliedpropaneservice.com



... **New on the Market in Berryessa Highlands** ...

Pristine Perfect
3 Bdrm, 2 1/2
Bath Home
Updated Kitchen
& Bathrooms
New Carpet &
Tile, Hardwood
Floors
Central H/A
Approx. 2,000 sf



\$544,500

1/3 Acre on
Quiet Court
Lovely Lake
Views
Fireplaces in
Family & Living
Rooms
Oversized 2 Car
Garage With
Dedicated
Workshop Area

CeCe Short
BRE#00783985
(707) 337-0224

Robin Short
BRE#01890377
(707) 738-3006

2015 Redwood Rd., Ste. 5
4338 Berryessa Knoxville Rd.
Napa



Help Plan the Future of Lake Berryessa

The County of Napa, in conjunction with Bureau of Reclamation (BOR), is now contemplating re-development of five of the Lake Berryessa Recreation Areas as new well-managed resorts open for public use. Ragatz Associates is assisting in the planning process. Ragatz Associates was chosen for its knowledge and experience in developing hotels, resorts and other recreational opportunities worldwide and will assist the County in identifying interested concession partners by marketing the opportunity to the resort community and performing a feasibility analysis to determine the best use of each site. The five properties are now referred to as Berryessa Point (formerly Berryessa Marina), Monticello Shores (formerly Rancho Monticello), Putah Canyon (formerly Putah Creek), Spanish Flat, and Steele Canyon (formerly Steele Park).

Starting in 1959, several individual boating and camping-oriented resorts were developed at Lake Berryessa. The U.S. Bureau of Reclamation (BOR), closed most of the resorts in 2006. All remnants of the developments were removed, and the properties have remained vacant ever since. It is now possible that several new resorts will be re-created at Lake Berryessa for visitor services. They will be well-managed and oriented to outdoor recreationists throughout northern California and beyond. In this regard, we are requesting your assistance by completing the following on-line survey. Parts of the survey printed below as an illustration of the topics for your consideration. (Editor’s Note: If you don’t have on-line access please ask a friend, relative, or neighbor to assist you.) <https://survey.zohopublic.com/zs/H0B5lh>

If you visited Lake Berryessa prior to 2010, what were your opinions of each of the following?

- > distance and time from where you live
- > ease of getting there
- > quality of fishing
- > security and safety
- > boating facilities
- > camping and RV facilities
- > lodging or other overnight accommodations
- > family-oriented environment
- > climate
- > quality of water in the Lake
- > consistency of water level in the Lake
- > conveniences stores, restaurants and taverns
- > proximity to wineries and attractions of Napa Valley
- > enforcement of rules and regulations
- > general scenery and natural environment

As noted in the introduction, Lake Berryessa is a popular and well-known boating and camping destination for millions of visitors. Seven concession areas provided an array of services throughout the Lake from 1959 to 2009.

How important would each of the following boating-oriented items be in your decision to boat at Lake Berryessa?

- > full-service marina
- > dry storage facilities for your own boat
- > fishing
- > lake patrolling and regulation of boaters
- > limits on boat speed and/or horsepower
- > separate areas for motorized & non-motorized craft
- > boating density on the Lake
- > availability of rental boats

Various types of overnight accommodations could exist at Lake Berryessa in addition to using one’s own personal camper or tent. How interested would you be in renting each of the following?

- > mobile home
- > park model RV
- > smaller RV
- > tent camping on the ground

- > “glamping,” i.e., a unique high-quality canvas tent on a foundation platform with kitchen, restroom with shower, all utilities and separate bedroom(s)
- > small rustic cabin/cottage without utilities, but near to hot showers and toilets
- > higher-end, larger cabin/cottage with kitchen, restroom with shower, all utilities and separate bedroom (s)
- > house-boat
- > hotel/motel

- In addition to boating and camping opportunities, there also could be a wide variety of other amenities and services at the various resort destinations at Lake Berryessa. How important would each of the following be in your decision to visit?
- > amphitheater with outdoor concerts and “name entertainment”
 - > convenience grocery stores

- >restaurants and other food service
- > taverns/bars
- > hiking, biking, walking trails
- > horseback riding
- > indoor-outdoor water park for year-round use
- > evening entertainment, music, dancing, movies, etc.
- > children’s activities
- > central clubhouse with swimming pool, fitness center
- > health and wellness facilities and seminars
- > equipment rentals: jet skis, off-road vehicles, boats
- > golf
- > conference, meetings and lifestyle retreat facilities
- > weddings venues
- > shuttle service to wineries and other attractions
- > wine tasting on the shores of Lake Berryessa
- > organized bird watching
- > defined areas for kayaking, canoeing, sailboarding
- > defined areas for jet skiing and wave running
- > classes on culinary arts, wellness, crafts, etc.
- > zipline
- > special events such as boat races, car clubs, triathalons, fishing tournaments, etc.
- > shooting range and clay facilities
- > wildlife safari park

Year	Season Total Rainfall
97-98	46.26”
98-99	23.46”
99-00	26”
00-01	24.7”
01-02	23.38”
02-03	31.6”
03-04	25.64”
04-05	36.36”
05-06	40.56”
06-07	12.7”
07-08	25.32”
08-09	23.96”
09-10	26.41”
10-11	37.92”
11-12	19.56”
12-13	20.65”
13-14	13.69”
14-15	19.56”
15-16	24.57
16-17	41.5” (3/8/17)

